

2021 ANNUAL REPORT



2021 ANNUAL REPORT TABLE OF CONTENTS

HISTORY AND PURPOSE

History and Purpose	1
---------------------------	---

STAFF

Court Performance Standards	2
Organizational Chart	3
Program Staff General Duties	4
2021 Volunteer Report.....	5 - 6
Training Summary	7
Revenue Summary	8 - 9

CHARACTERISTICS OF JUVENILES SERVED AND SERVICES OFFERED

Legal Status.....	10
Juvenile Detention Alternative Initiative.....	11 - 12
Detention Statistics.....	13 - 18
Youthful Offender Report.....	19
Case Plans.....	20

JUVENILE JUSTICE CENTER PROGRAMS21 - 34

The COVID-19 pandemic affected multiple areas within the Juvenile Justice Center, which will be reflected in the data reported in this annual report.

HISTORY AND PURPOSE

- The Missouri Juvenile Code, Section 211.331, sets forth that in each county of the first and second classes it is the duty of the county court (commission) to provide a place of detention for children coming within the provisions of the code. The code further states "detention should approximate as closely as possible the care of the children in good homes."
- The Robert L. Perry Juvenile Justice Center is a facility designated by the 13th Judicial Circuit (encompassing Boone and Callaway counties) to provide detention, evaluation services, and temporary care to juveniles placed at the Juvenile Justice Center by order of the court. Abused, neglected, or dependent children who are in need of protective care and custody are not served by the center.
- The Robert L. Perry Juvenile Justice Center began serving juveniles on January 15, 1975. On January 24, 1995, the Juvenile Justice Center moved into its present facility. The facility is coeducational, with a detention wing and a program wing. The juveniles placed at the Juvenile Justice Center are primarily between 11 and 18 years of age. The detention wing originally housed 12 residents and the program wing housed 21 residents. On October 5, 2004, the Juvenile Justice Center finished an expansion of the detention wing. The detention wing now houses 24 residents: 20 males and 4 females. The program wing still houses 21 residents: 14 males and 7 females.
- With appropriated funding, Raise the Age went into effect July 2021. Additionally, Holding Certified Youth went into effect December 2021.
- In a structured and supervised setting, with an atmosphere of care and concern, juveniles at the Juvenile Justice Center involve themselves in a variety of learning situations. All residents are required to pursue some type of academic achievement while in residence. The Juvenile Justice Center, in conjunction with Columbia Public Schools, provides school classes daily. Additionally, residents participate in needs based educational classes, complete individual contract assignments to address identified needs, and participate in other educational, recreational, and life skills activities. Families of juveniles are encouraged to visit residents and to participate in programming developed to promote positive family functioning.
- The commitment by Boone County to finance and create innovative programming has greatly benefited juvenile offenders. Through the various services and activities provided for these juveniles, many of them have been able to return home, alter problematic behaviors, and be successful in the community.

COURT PERFORMANCE STANDARDS

• Thirteenth Judicial Circuit

Adopted by the Court en Banc May 5, 1999

The order mandated that certain standards would apply to each of the court performance areas set forth in Administrative Order 3-99 and 4-99. These standards are the hallmark against which facility and individual staff performance are measured.

Performance Area 1: Access to Justice

- 1.1 Open Conduct of Public Proceedings and Business
- 1.2 Safety, Accessibility and Convenience of Court Facilities
- 1.3 Effective Without Hardship or Inconvenience
- 1.4 Courteous, Responsive and Respectful Treatment of Public
- 1.5 Reasonable, Fair, Affordable Costs for Access to Proceedings and Records

Performance Area 2: Expedition and Timeliness

- 2.1 Timely Case Processing
 - Follow recognized guidelines
 - Keep current with incoming caseloads
- 2.2 Compliance with Established Schedules
 - Disbursement of funds
 - Required reports and information
 - Requests for information
- 2.3 Prompt Implementation of Changes in Law and Procedure

Performance Area 3: Equality, Fairness and Integrity

- 3.1 Fair and Reliable Procedures Consistent with Laws, Rules and Policies
- 3.2 Representative Juries
- 3.3 Individual, Fair Case Decisions
 - Consistent among like cases
 - Based on legally relevant factors
- 3.4 Clarity of Decisions
 - Issues
 - Compliance Requirements
- 3.5 Responsibility for Enforcement of Orders
- 3.6 Accurate Production and Proper Preservation of Records

Performance Area 4: Independence and Accountability

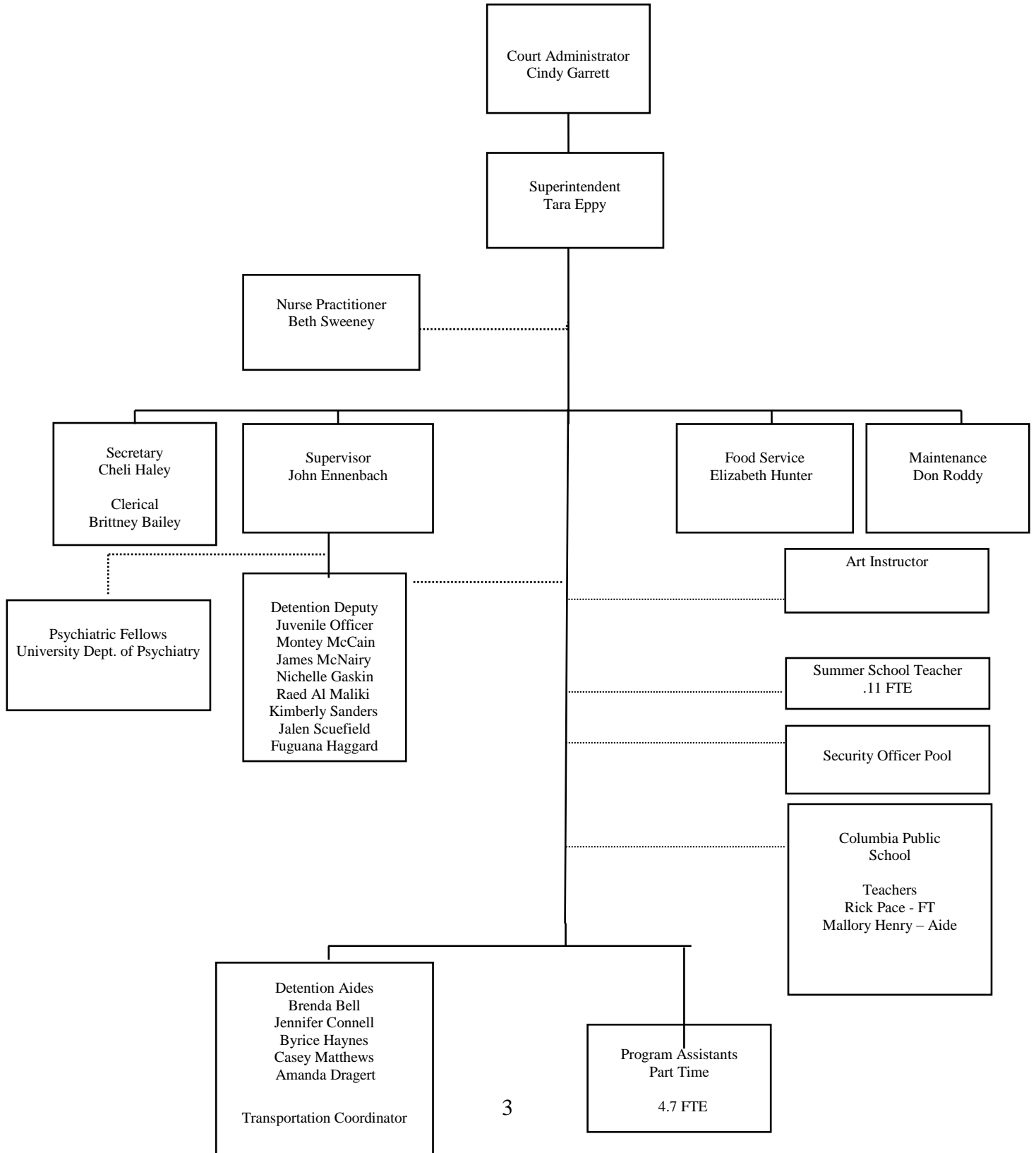
- 4.1 Institutional Integrity and Comity in Governmental Relations
- 4.2 Accountability for Public Resources
- 4.3 Fair Employment Practices
- 4.4 Community Education on Programs
- 4.5 Anticipation and Response to Change

Performance Area 5: Public Trust and Confidence

- 5.1 Public Perception of Accessibility of Court and Justice It Delivers
- 5.2 Public Trust and Confidence in Expeditious, Fair and Reliable Court Functions and Fair Decisions
- 5.3 Public Perception of Court Independence and Accountability

ORGANIZATIONAL CHART

As of May 25, 2022



PROGRAM STAFF – GENERAL STAFF

- **Supervisory Staff**

Supervisory staff consists of the superintendent and supervisor. The supervisory team ensures the safety and security of residents, provides staff supervision, develops programming, develops policies and procedures, coordinates staff training, provides oversight in grant application and facilitation of grant-funded projects, and acts in a public relations capacity within the 13th Circuit and communities around the state.

- **Detention Deputy Juvenile Officer Staff**

The detention deputy juvenile officer staff provides for the safety and security of residents, delivers programming to residents, prepares pre-dispositional assessments and reports, administers medications, obtains social histories from residents and their families, develops individualized case plans, transports residents, facilitates the admission and release of residents, administers assessment instruments, and provides leadership and supervision to junior staff.

- **Detention Aide/Program Assistant Staff**

The detention aide and program assistant staff provides for the safety and security of residents, assists in the supervision of residents and monitoring of residents' behaviors, assists in the delivery of programming to residents, transports residents, and communicates with residents' families.

COVID-Related Changes

During the COVID-19 pandemic, staff were required to wear masks and stay socially distanced (6 feet apart) while in the facility to the extent they were able to do so. Quarterly meetings with the court, the Juvenile Office and the Juvenile Justice Center were not held due to social distancing requirements and Supreme Court orders restricting gatherings. The county health department and Supreme Court issued various orders during 2021 that required staff to be out of office to quarantine after a close contact, and isolate if they were positive.

2021 VOLUNTEER REPORT

Due to Covid-19, non-essential visitors were not allowed access to the facility for the majority of the year; therefore, the hours below are significantly lower than past years.

- In 2021, 9 volunteers from various community churches provided their time to residents at the Juvenile Justice Center. Residents may, but are not required to, participate in the Religious Education Program.

<u>Religious Education Volunteers</u>	<u>Volunteer Hours</u>
Frank Roddy	23.50
Carole Iles	16.75
Kelly Pierce	11.50
Lane Pierce	10.00
Others – Volunteers with less than 10 hours	14.00
Total Religious Education Volunteer Hours	75.75

- In 2021, 0 general educational volunteers provided their time to residents at the Juvenile Justice Center.

<u>General Education Volunteers</u>	<u>Volunteer Hours</u>
Total General Education Volunteer Hours	.00

2021 VOLUNTEER REPORT

- In 2021, student interns/practicum students provided their time to the residents at the Juvenile Justice Center. Students in placement come from area colleges and universities and assist staff with scoring assessments, tracking log notes for certifications, destruction of files pursuant to court orders, and preparing point cards. Students also assist with and lead Social Skills groups, participate in recreation and free time activities with residents, provide homework and contract work assistance to residents, and research local programming and resources available to residents and their families.

- **Total Student Intern Volunteer Hours** **533.25**
- **Total 2021 Volunteer Hours** **609.00**
- **Average Volunteer Hours per Juvenile, 2021** **3.2**

Comparison of 2020 and 2021 Volunteer Statistics

	<u>2020</u>	<u>2021</u>
Number of Volunteer Hours Provided	48.25	609.00
Number of Admissions	186	193
Average Number of Volunteer Hours per Juvenile	.3	3.2

TRAINING SUMMARY

Detention Standards require 24 hours of updated and specialized training each year to reinforce and enhance staff's skills. Outside training options were eliminated due to Covid-19.

- Juvenile Justice Center management staff members were provided a total of 74.50 training hours in 2021. In-service training accounted for 18.50 hours, outside training accounted for 0 hours, web based training accounted for 56.00 hours and video training accounted for 0 hours.
- Detention Deputy Juvenile Officers received a total of 236.00 training hours: in-service training accounted for 120.00 hours, outside training accounted for 60.00 hours, web based training accounted for 51.75 hours and video training accounted for 4.25 hours.
- Program Assistants/Detention Aides received a total of 168.50 training hours: in-service training accounted for 119.50 hours, outside training accounted for 0 hours, web based training accounted for 49.00 hours and video training accounted for 0 hour.
- Support staff were provided a total of 66.75 training hours: in-service training accounted for 33.00 hours, outside training accounted for 1.00 hours, web based training accounted for 32.75 hours and video training accounted for 0 hours.
- The total training hours for 2021 for the Juvenile Justice Center were 545.75 hours: 291.00 hours of in-service training, 61.00 hours of outside training, 189.50 hours of web based training and 4.25 hours of video training.

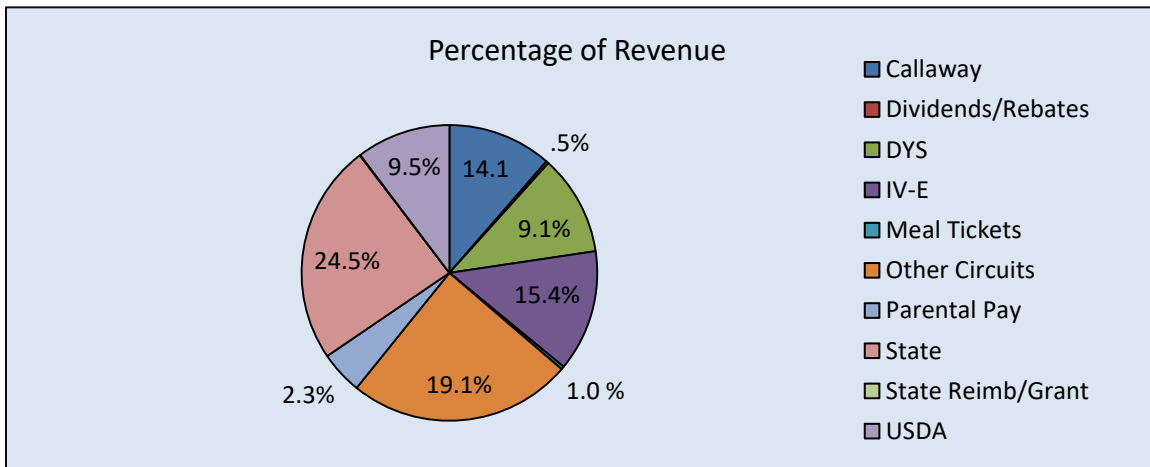
This is an increase of 46.50 hours in total training hours compared to 2020's total of 499.25.

REVENUE ANALYSIS

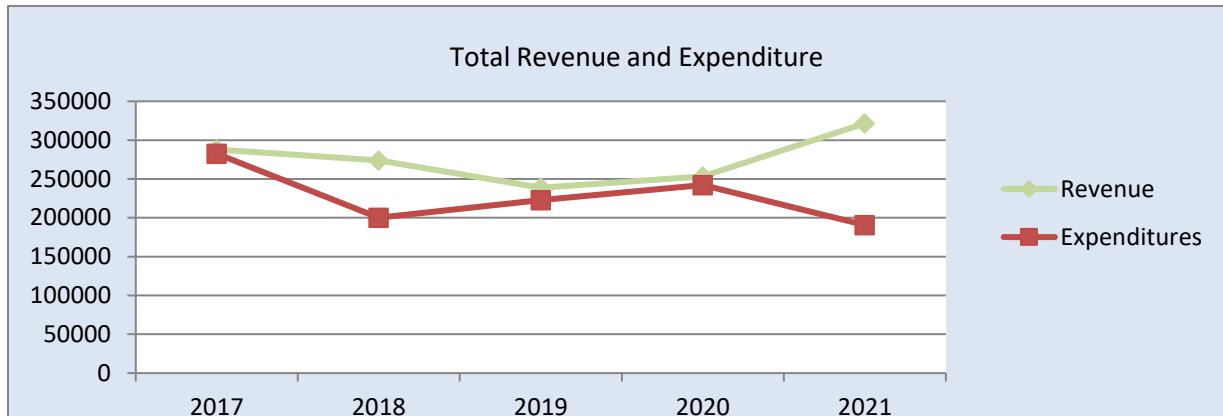
Revenue Analysis, 2017 through 2021

	2017	2018	2019	2020	2021
Federal USDA Grant	\$29,509.00	\$29,094.00	\$22,618.00	\$25,268.00	\$33,148.00
IV-E Reimbursement	\$53,655.00	\$40,348.00	\$36,927.00	\$47,904.00	\$42,789.00
Callaway Reimbursement	\$41,177.00	\$33,818.00	\$33,800.00	\$49,981.00	\$36,647.00
DYS Contract for Evaluation	\$17,824.00	\$21,540.00	\$21,780.00	\$32,520.00	\$35,280.00
State Reimbursement	\$80,038.00	\$77,042.00	\$58,548.00	\$63,462.00	\$77,644.00
Other Circuits Reimbursement	\$61,410.00	\$57,060.00	\$45,540.00	\$28,920.00	\$78,840.00
Parental Pay Reimbursement	\$1,461.00	\$9,839.00	\$15,851.00	\$3,475.00	\$15,072.00
Meal Tickets	\$1,131.00	\$2,364.00	\$2,106.00	\$1,024.00	\$1,081.00
Dividends/Rebates	\$1,508.00	\$2,631.00	\$1,317.00	\$693.00	\$905.00
State Reimb/Grant	\$92.00	\$171.00	\$193.00	\$179.00	\$178.00
Prior Year Cost Repayment	\$0.00	\$0.00	\$0.00	\$0.00	\$0.00
TOTAL REVENUE	\$287,805.00	\$273,908.00	\$238,680.00	\$253,426.00	\$321,584.00

- Revenue is a priority for the Juvenile Justice Center to aid in offsetting expenses incurred by Boone County.
- When a juvenile is placed on evaluation, short term care, or placement status, the parents are ordered by the court to pay a daily amount of parental support, based on parental income, while the juvenile is in placement at the Juvenile Justice Center.
- The increase in revenue is due in large part to the increase in average daily population and resident days from other circuits for 2021.
- Another increase in revenue was due in large part to an increased effort in collecting parental pay.



REVENUE SUMMARY



Net Cost: Budget Revenue Minus Expenses

Present Facility

1997	1998	1999	2000	2001
\$293,585.85	\$314,345.66	\$212,268.42	(121,963.31)	(\$78,646.76)

2002	2003	2004	2005	2006
(\$37,422.96)	(\$44,199.08)	(\$68,046.44)	(\$65,235.09)	(\$66,280.06)

2007	2008	2009	2010	2011
(\$87,694.83)	(\$85,745.17)	(\$64,828.75)	(\$23,326.75)	\$67,785.56

2012	2013	2014	2015	2016
\$36,222.62	\$85,487.61	\$120,430.04	\$148,696.91	\$144,542.77

2017	2018	2019	2020	2021
(\$5,374.28)	(\$73,919.41)	(\$16,005.00)	(\$11,089.00)	(\$131,012.00)

- From 2000 through 2010, revenue exceeded expenses. In 2010, the 13th Judicial Circuit Juvenile Division adopted the strategies of the Juvenile Detention Alternative Initiative (JDAI) which resulted in a direct reduction of juveniles placed at the Juvenile Justice Center. The JDAI has reduced the total number of juvenile admissions and resident days. (Additional JDAI information is on page 11). In 2021, contract adjustments, more contract holds, and a focus on collecting parental pay have seen a return to revenue exceeding expenses.

LEGAL STATUS OF RESIDENTS IN DETENTION

- There are two separate wings at the Robert L. Perry Juvenile Justice Center: The detention wing is primarily for juveniles on detention status (those awaiting adjudicatory hearings) and the program wing is primarily for juveniles on evaluation, short term care, or placement status (post adjudication).
- JUVENILES ON DETENTION STATUS are eligible to participate in educational, recreational and other activities held within the Juvenile Justice Center. Outdoor recreation is held in an enclosed, secure area.
- JUVENILES ON EVALUATION STATUS are provided services following adjudication and prior to disposition. Juveniles on evaluation status may be eligible to participate in supervised recreation in a non-secure area and/or supervised activities outside the Juvenile Justice Center, and may be eligible for passes allowing them to leave the center for a specified period of time. Detention Deputy Juvenile Officers develop caseplans for the residents to complete. The caseplans address the residents' risks and needs related to the adjudicated offenses. Residents may also be referred for substance abuse assessments or psychiatric assessments. Information regarding these topics, as well as the residents' participation in school, group programming, and activities is included in an evaluation report, which is filed with the court.
- JUVENILES MAY RETURN TO THE CENTER ON SHORT TERM CARE OR PLACEMENT STATUS following evaluation in order to complete contract obligations or while alternative out-of-home placement is being sought. Juveniles on short term care status or placement status may be eligible to participate in supervised recreation in a non-secure area and/or supervised activities outside the Juvenile Justice Center, and may be eligible for passes allowing them to leave the center for a specified period of time.

JUVENILE DETENTION ALTERNATIVE INITIATIVE

Juvenile Detention Alternatives Initiative (JDAI) is a process where juvenile justice professionals are reconsidering their use of detention and by implementing eight core strategies, using detention only when necessary for those youth that will: 1) pose a threat to community safety if released pending their court date, or 2) will likely fail to appear for their court date.

The eight core strategies of JDAI involve the following:

- Collaboration among juvenile justice agencies, community organizations and other government agencies.
- The use of data in making policy and case-level decisions.
- Objective instruments to guide detention decisions.
- Operation of a continuum of non-secure detention alternatives.
- Case processing efficiencies to reduce time between arrest and case disposition.
- Improve conditions of confinement.
- Safe reductions of special populations.
- Racial/ethnic fairness in policy and case-level decision making.

According to information provided on the Juvenile Detention Alternatives Initiative (JDAI) Website (www.aecf.org), JDAI began as a project of the Annie E. Casey Foundation in 1992 with an overall purpose to show others that juvenile court jurisdictions can establish more effective and efficient juvenile justice methods to accomplish the purpose of juvenile detention without jeopardizing public safety. The Annie E. Casey Foundation's vision was that all youth involved in the juvenile justice system would have opportunities to develop into healthy and productive adults. As of 2017 JDAI was in the process of being replicated in more than 200 jurisdictions in 39 states and the District of Columbia.

The main goals of JDAI are to:

- Reduce the number of youth unnecessarily or inappropriately detained.
- Decrease the number of youth who fail to appear for their court appearances or who re-offend pending adjudication.
- Redirect public funds toward successful reform strategies.
- Reduce the disproportionate minority confinement and contact within the juvenile justice system.
- Improve the juvenile justice system.

Initially, grant funding assisted the 13th Circuit Juvenile Division in implementing JDAI in October 2009. A JDAI collaborative team was established in December of 2009 and is made up of representatives from local law enforcement, Division of Youth Services, mental health, community organizations, schools and county government. The grant funds were made available through the Missouri Department of Public Safety and the Missouri Juvenile Justice Advisory Group from funding provided by the United States Department of Justice, and the Office of Juvenile Justice and Delinquency Prevention.

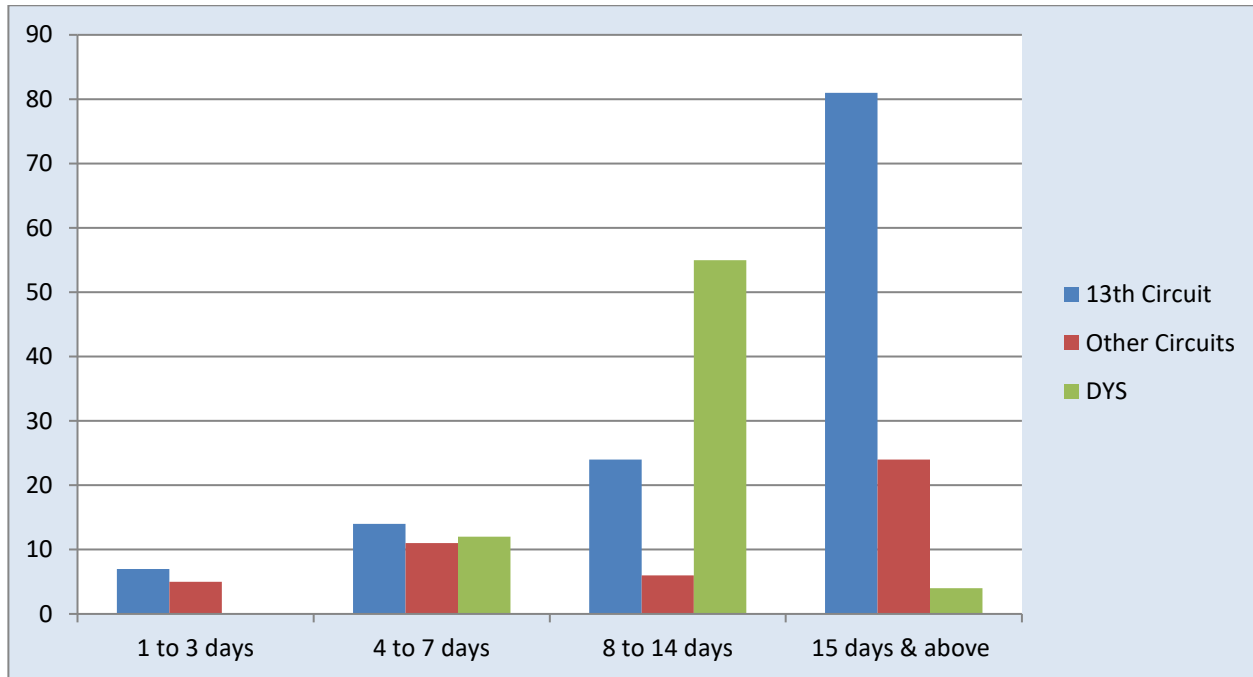
Since the grant funding ended, the collaborative team has continued to meet regularly to advance the goals of JDAI in the 13th Circuit. Several replication site visits have been hosted in an effort to share knowledge, experiences and information with circuits joining JDAI around Missouri.

Another area of focus since implementing JDAI in 2009 has been in the area of developing detention alternatives. Currently the Juvenile Division offers several different alternatives including an evening reporting center, conditional release, in-home detention and crisis intervention services, all of which are considered prior to placing youth in secure detention. See the Juvenile Office annual report for more information.

In 2011, the Juvenile Division developed a Disproportionate Minority Contact (DMC) committee to work on ensuring racial/ethnic fairness when referring youth of color as well as case level decision-making at the Juvenile Officer. The committee was renamed” Racial and Ethnic Disparity (RED).

*While the COVID-19 pandemic has affected the ability to hold regular meetings, data is still being collected and shared with committee members.

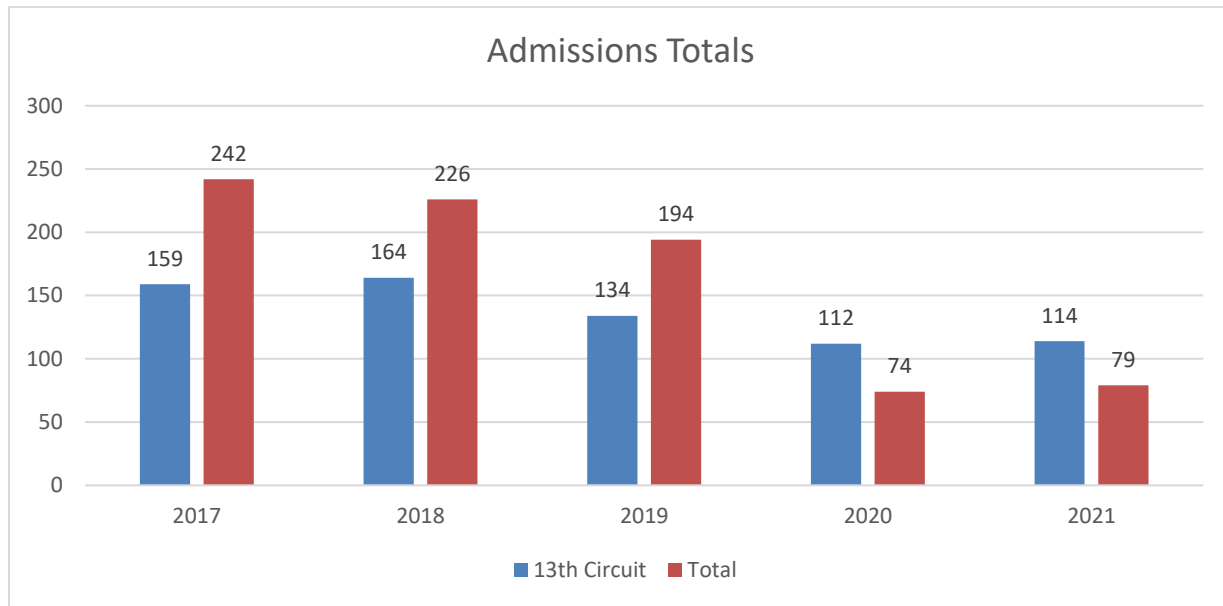
2021 DETENTION STATISTICS



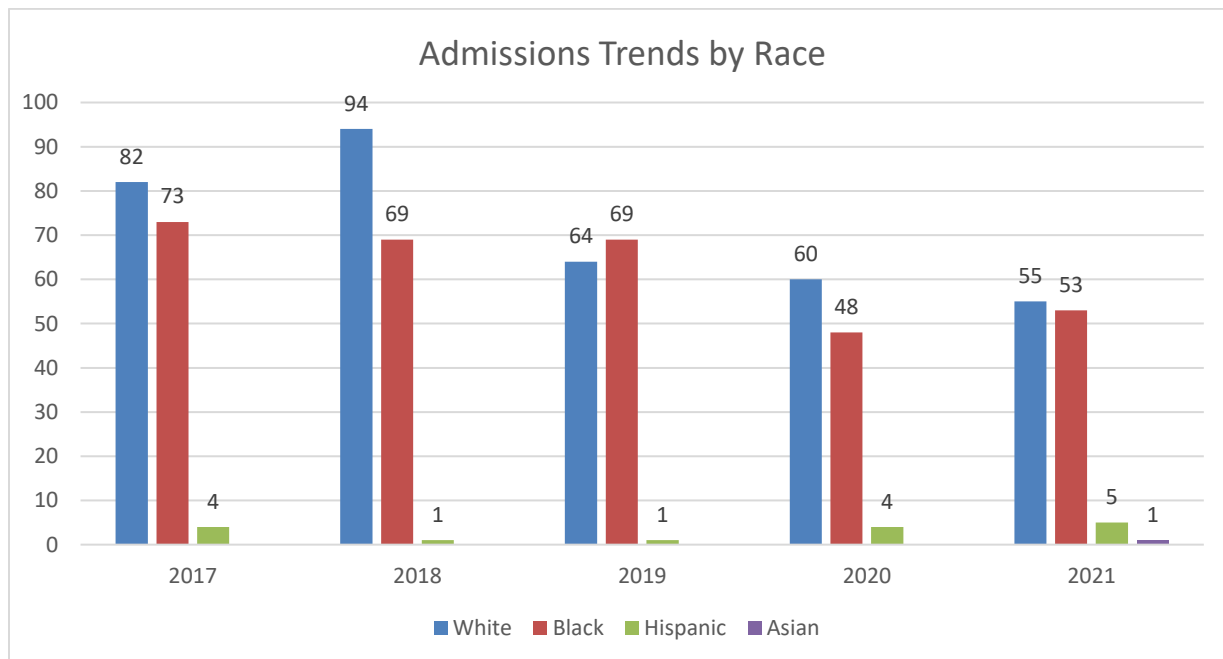
The above graph represents the number of residents who were on detention status by jurisdiction for a range of days. This includes all youth on detention status including any youth carried over from 2020. The average length of stay for all youths was 29.4. The average length of stay for 13th Circuit was 15.1. There were 193 total admissions to the facility in 2021. This includes youth admitted to both the detention and program wings.

- 114 juveniles were under the jurisdiction of the 13th Judicial Circuit.
43 juveniles were placements from other circuits.
- 189 juveniles were on detention status. This number includes juveniles detained in 2020 and released in 2021 and juveniles already at the facility and committed to DYS.
- 14 juveniles were admitted to the facility on evaluation status (program side).
- 0 juveniles were at the center on short term care and placement status.
- There were 35 Division of Youth Services admissions (warrants).
- There was 1 Post Certified Youth admission.
- The average daily population for all youth was 6.5. The average daily population for 13th Circuit was 3.4.

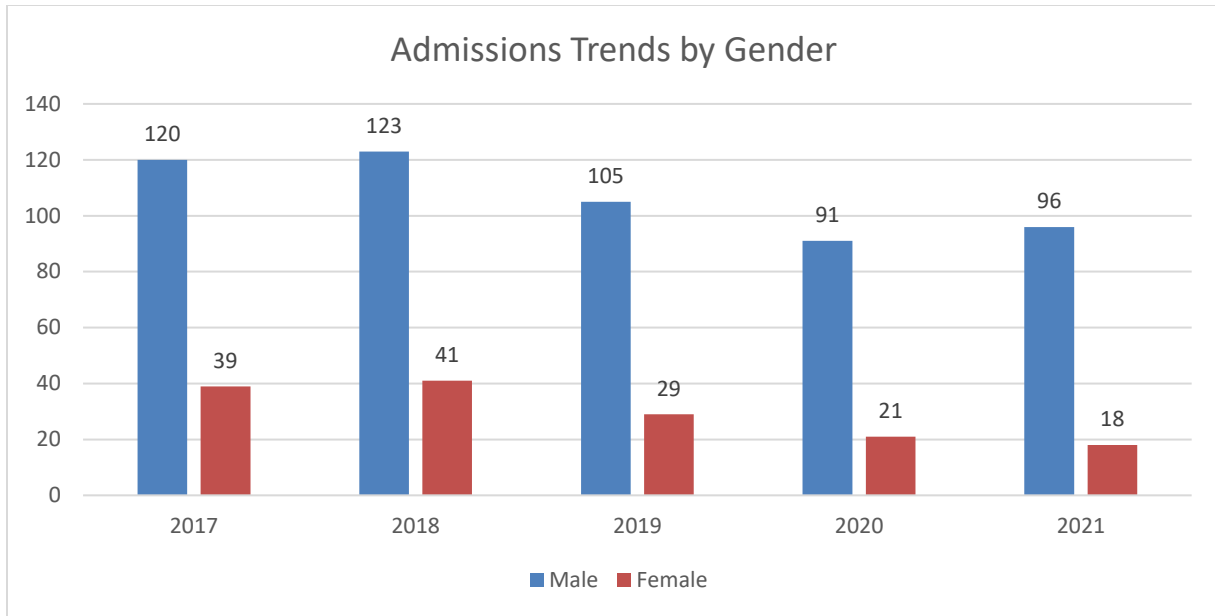
ADMISSION TRENDS



The chart above shows the 5-year trend of admissions to the facility. It depicts both the 13th Circuit admissions and the total admissions to the facility, which includes out-of-circuit admission and DYS admissions.

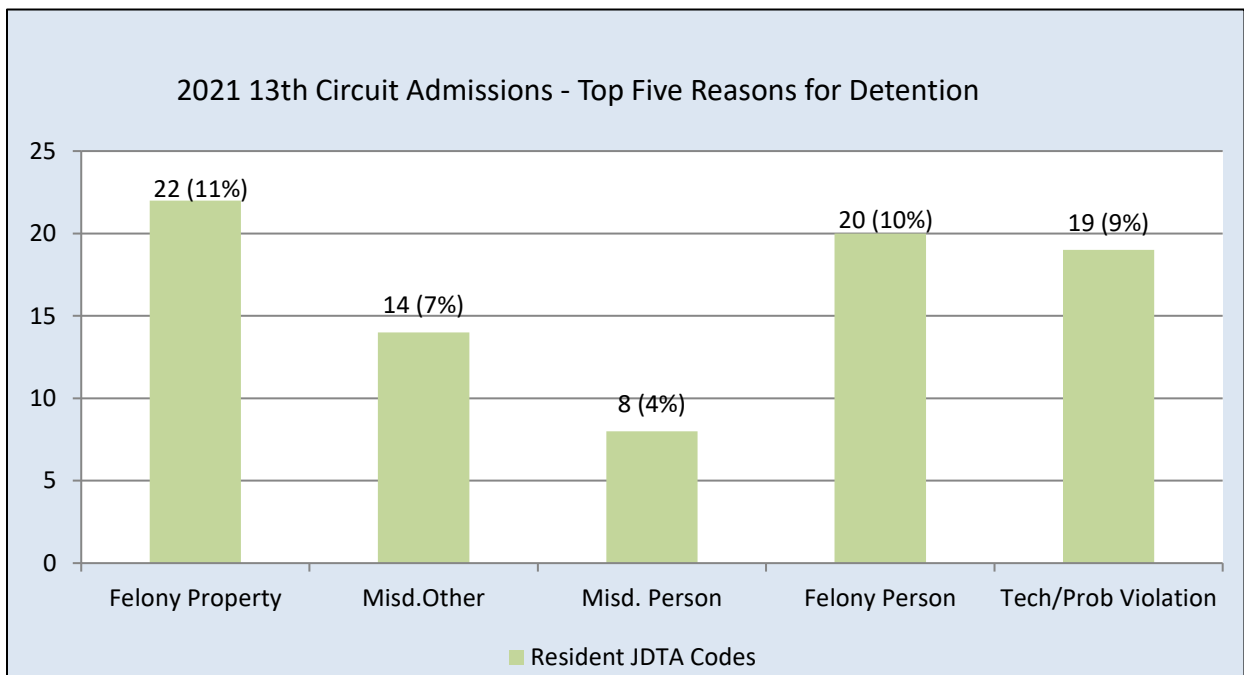


The chart above shows the 5-year trend of 13th Circuit admissions to the facility by race.

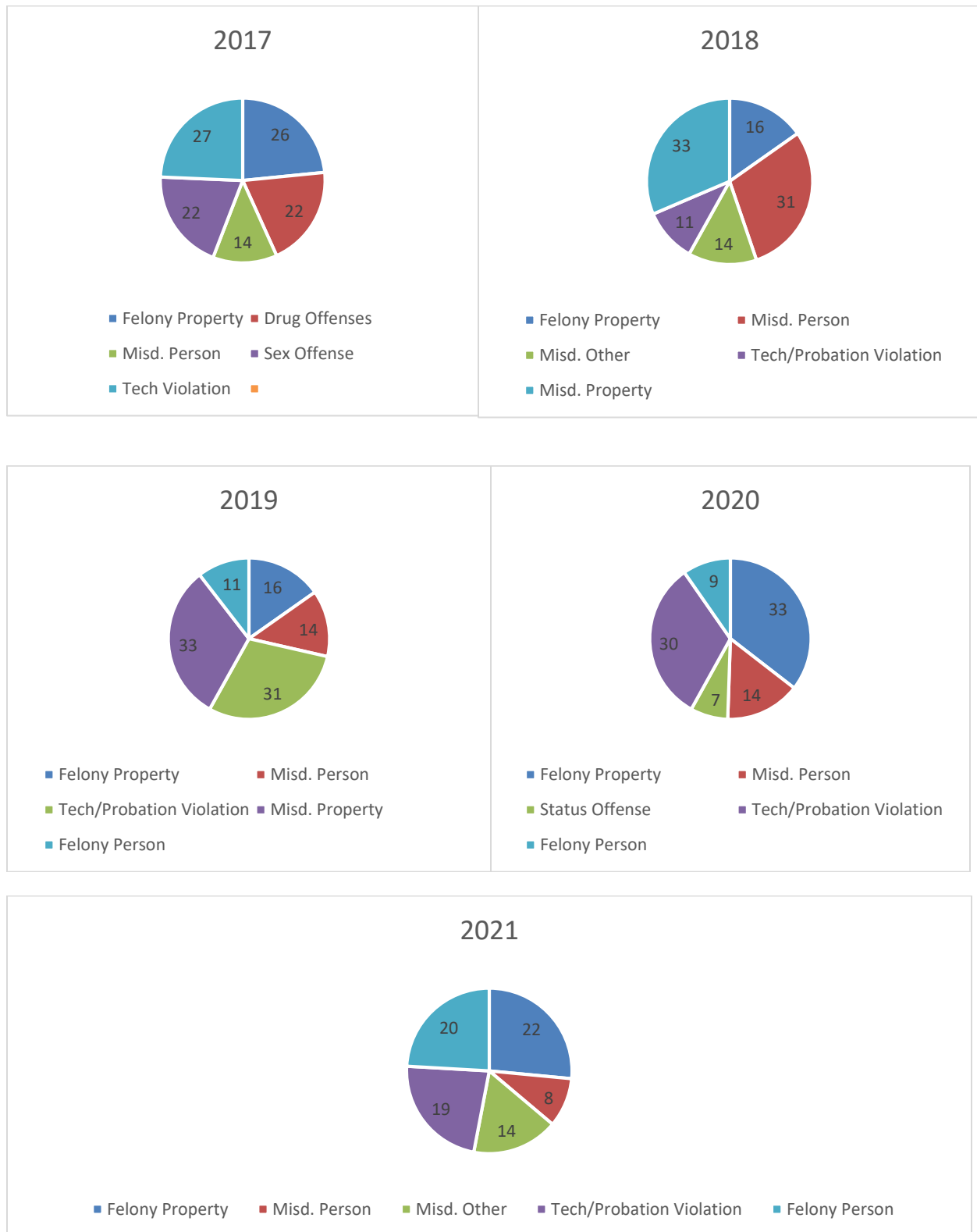


The chart above shows the 5-year trend of 13th Circuit admissions to the facility by gender.

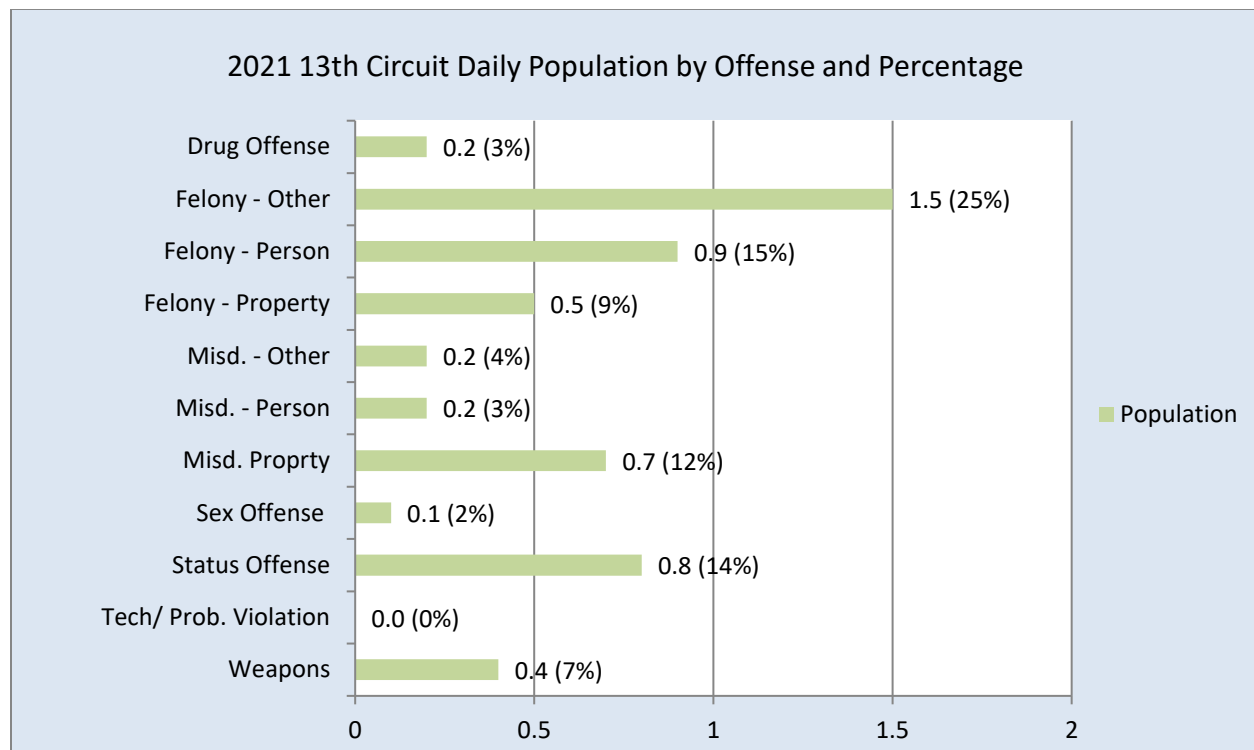
Of the 114, 13th Circuit youth who were admitted to the Robert L. Perry Juvenile Justice Center in 2021 on detention status, the following is a breakdown of the top five reasons for detention and the number and percentage of youths admitted for each category:



Also included for comparison, in the next several pie charts, are the top five reasons for detention over the past five years.



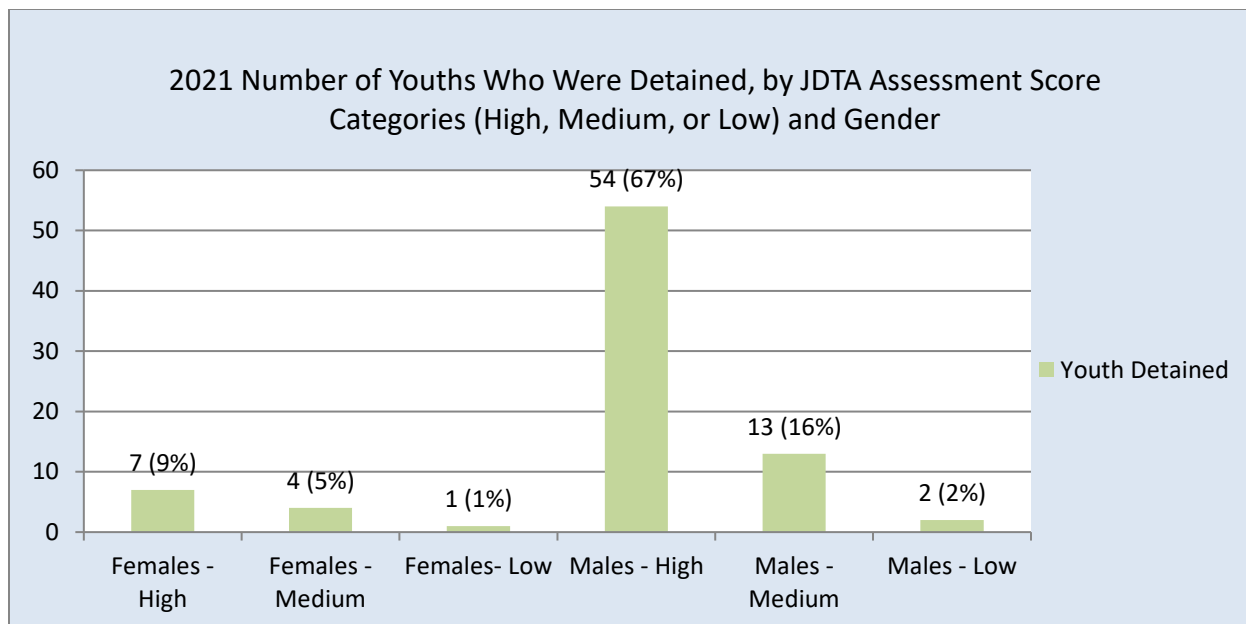
In 2021, the average daily population of 13th Circuit youth on detention status was 5.9. The chart below is a breakdown of the average daily population by offense and percentage. These figures do not include any Division of Youth Services warrants.



Since January 1, 2010, the Juvenile Division has been using the Juvenile Detention Assessment (JDTA) to guide decision-making on whether or not to detain youth presented for detention. The JDTA has been validated by the Office of State Courts Administrator and effective January 1, 2012, all juvenile court jurisdictions in Missouri have been mandated by Supreme Court Operating Rule 28 to use the screening assessment prior to placing youth in detention.

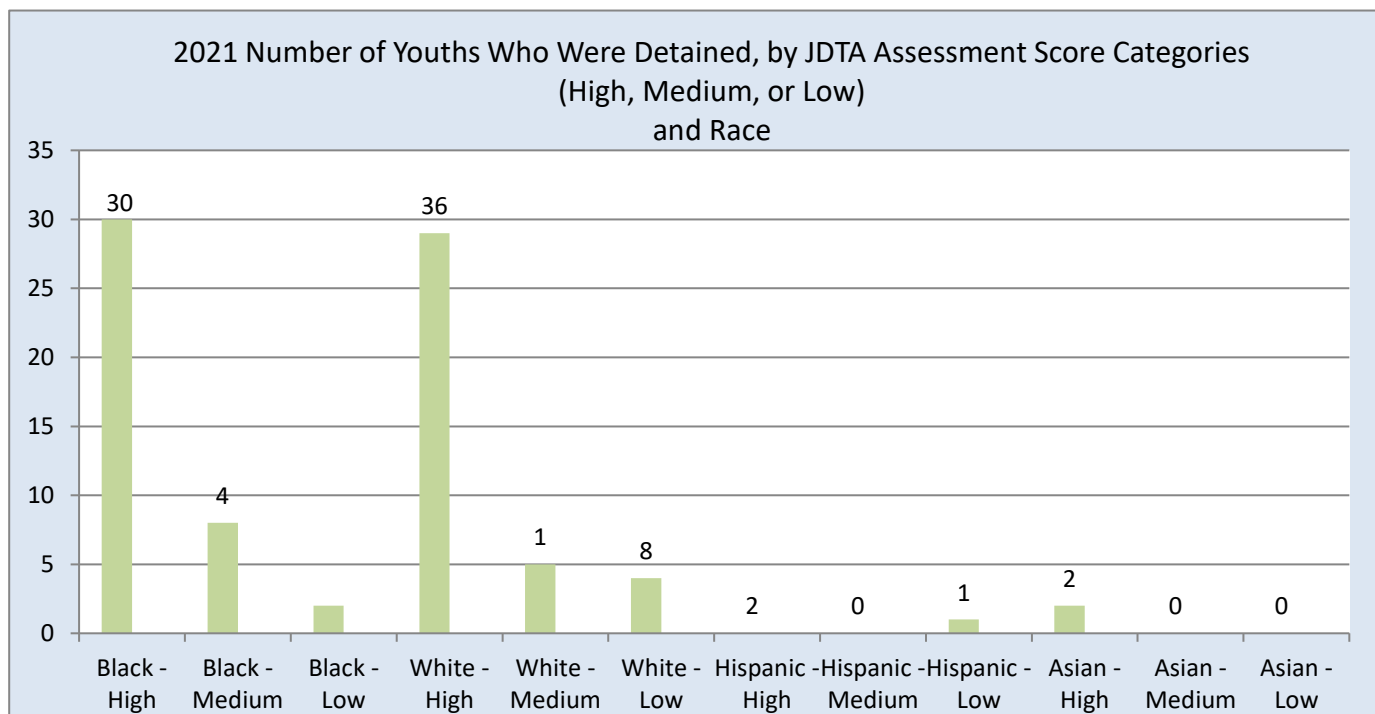
In 2021, 415 juveniles were administered the Missouri Juvenile Detention Assessment form (JDTA). A score of 1 to 9 (Low) indicates release, a score of 10 to 14 (Medium) indicates detention alternative, and a score of 15 and above (High) indicates detention. There is a capability for supervisory override of the indicated action, based on specific criteria.

Of the 415 youths screened using the JDTA, 81 were placed in detention. The following is a breakdown of the number and percentage of total youths, by assessment score categories and gender, who were administered the JDTA and were detained. It should be noted that youths on DYS warrants are not always administered the JDTA. Additionally, out-of-jurisdiction youths are not assessed using the JDTA by the 13th Circuit staff, as the 13th Circuit does not authorize those detentions. A result of both practices is that the number and percentage of youths detained will not match the number and percentage of admissions for detention.



Total #/% Females 12/15%	Total #/% Males 69/85%
---	---

The following is a breakdown of the number of total youths, by assessment score categories and race, who were administered the JDTA and were detained.



Total #/% White Youths 38/47%	Total #/% Black Youths 40/49%	Total #/% Hispanic Youths 1/1%	Total #/% Asian Youths 2/2%
--	--	---	--

13TH JUDICIAL CIRCUIT YOUTHFUL OFFENDER REPORT

The following reports are for youthful offenders, ages 11 through 12.

Admissions by Age, 2017 through 2021

	2017		2018		2019	
Age	Detention	Evaluation	Detention	Evaluation	Detention	Evaluation
11	1	1	0	0	1	0
12	14	3	10	0	6	0
Total for Status	15	4	10	0	7	0
Total for the Year	19		1		7	

	2020		2021		Total	
Age	Detention	Evaluation	Detention	Evaluation	Detention	Evaluation
11	0	0	0	0	2	1
12	3	0	6	0	36	3
Total for Status	3	0	6	0	38	4
Total for the Year	3		6		42	

Resident Days, 2017 through 2021

2017	2018	2019	2020	2021	Total
186	196	141	27	374	924

Case Plans

Case plans are an integral tool used on the program side of Juvenile Justice Center for those residents placed on evaluations, short term care, or placement status. Case plans are developed by the Detention Deputy Juvenile Officers. The case planning process is a collaborative effort involving the resident, Juvenile Justice Center staff and Juvenile Office staff. The case plan process involves assessing, planning, implementing, coordinating, monitoring, and evaluating the options and services required to meet the resident's needs and addressing risk factors.

A primary tool used by the juvenile division in delinquency and status offense cases is the Risk and Needs Assessment form. A risk assessment is completed on a juvenile by the detaining Deputy Juvenile Officer, upon the time of the juvenile's admission, and helps guide decision-making regarding disposition. A needs assessment is completed when the Juvenile Officer is going to provide some level of supervision and is used to assist with determining the level of programs / services that would best meet the youth's needs.

Another tool utilized during the case plan process is the Ansell-Casey Life Skills Assessment tool. This web-based tool assesses the behaviors and competencies youth need to achieve their long term goals. Youth self-evaluate on the following life skills:

- Maintaining health relationships
- Work and study habits
- Planning and goal setting
- Using community resources
- Daily living activities
- Budgeting and paying bills
- Computer literacy
- Permanent connection to caring adults

The tool is designed to be used in a collaborative conversation between the resident and their assigned Detention Deputy Juvenile Officer. Once completed, the results are used by the Detention Deputy Juvenile Officer to create a strength-based case plan.

Once assigned a case plan, residents have seven days to complete the goals. For each case plan completed, residents receive "effort" points through the Level System. Upon completion of a case plan, Detention Deputy Juvenile Officer's complete a Contract Report that summarizes the resident's accomplishments, conduct and effort throughout their placement, and participation in services and programming such as group programming and substance abuse and mental health services.

During 2021, there were 56 program residents that were provided case plan services. Of those, 26 residents were in placement at least 14-21 days and were at least 14 years old to participate in the Ansell-Casey process.

JUVENILE JUSTICE CENTER PROGRAMS AND SERVICES

Art Program

The Robert L. Perry Juvenile Justice Center art program is designed for juveniles in placement on the detention and program side at the Juvenile Justice Center. The art program is designed as an incentive to increase participants' self-esteem and to demonstrate to this population of juveniles, in a tangible way, the reward for making good choices and decisions, thereby increasing the likelihood that they become accountable, successful members of their communities.

The art program was implemented in January 2000. Juveniles have the chance to work in several different areas, including drawing, pen and ink, acrylic painting, and clay projects. There is a pottery wheel and a kiln for the firing and glazing of clay projects. An art instructor provides instruction approximately ten hours a week.



“Our Family Garden”

“Our Family Garden” is a seasonal activity for juveniles in placement on the program wing of the Robert L. Perry Juvenile Justice Center. The juveniles who have earned outside privileges have the opportunity to prepare the garden plot for planting, plant vegetable and flower seeds, weed and provide upkeep of the garden and, finally, harvest the vegetables. In 2021, the garden produced tomatoes, green peppers, onions, squash, cucumbers, strawberries, and lettuce for use at the Juvenile Justice Center. Juveniles were also able to complete community service work hours by working in the garden. The garden activity is presented to the juveniles as a positive activity in which they can engage upon return to their communities. Juveniles reacted positively to their gardening experience, and were excited about contributing and eating food they had grown themselves.

Educational Programming

Educational programming is a key component of the Robert L. Perry Juvenile Justice Center program and one of the primary methods of assisting juveniles in changing their negative behaviors. The topics are modified to best accommodate the age and gender of the participants and the programs are facilitated by Detention Deputy Juvenile Officers. In 2021, the educational programming was provided by staff in the areas of drug and alcohol prevention, anger management, communications, family/peer relationships, health and nutrition, and other needs based topics. In 2021, COVID affected the frequency and resident participation in educational programs, over 63 educational programs were presented to the residents at the Juvenile Justice Center.

Daniel Boone Library Book Club

Juvenile Justice Center residents participated in a book club through the Daniel Boone Library. As part of the book club, residents were provided pre-selected books to read that were geared toward issues that are challenging to adolescents in today's world. The residents are allowed to keep the books. During book club, residents read excerpts from their book and engaged in group discussions. In 2021, 6 hours of book club were provided to kids. During each visit, the library also gives each participant a book to take with them when they leave the facility. COVID 19 affected library visits, however the library still ensured the residents received books during their placement, and virtual visits were planned.

Educational Program: Robert L. Perry Juvenile Justice Center School

Since the facility first opened in January 1975, juveniles in placement at the Robert L. Perry Juvenile Justice Center have been provided quality educational services through the Juvenile Justice Center School Program, in conjunction with the Columbia Public School District.

Columbia Public School District Staff evaluates Juvenile Justice Center's educational needs every year, providing students with educational staff that can include teachers, special education staff, Title I staff or instructional aides. In order to provide school over the summer, the Juvenile Justice Center employs a part-time certified summer school teacher to provide instruction to the juveniles that are required to attend. 252.75 hours of instruction were provided during the 2021 summer school program.

Cognitive Behavioral Intervention (CBI) Programming Report

CBI is an evidence-based program that revolves around the concept that if a person changes their thinking, it helps them to change their behavior. It has become the key philosophy of all programming for juveniles in residence on the program wing at the Robert L. Perry Juvenile Justice Center. CBI helps residents learn how to deal with their problem behaviors so they are able to make the right choices and stay out of trouble. The intent of the program is to challenge the residents to think differently about their attitudes, beliefs, thinking patterns, and choices, and to realize they have different choices or options in life experiences. The program presented to the Juvenile Justice Center residents is called "Thinking for a Change" and is made up of the following 15 individual lessons, after which the programming starts over again, in a continuous cycle.

1. Cognitive Self Change	9. Check-Ins
2. Active Listening	10. Knowing Your Feelings
3. Asking Questions	11. Understanding Others' Feelings
4. Giving Feedback	12. Responding to Others' Feelings
5. Thoughts vs. Feeling	13. Dealing With a Stressful Conversation
6. Thinking Reports	14. Responding to Anger
7. Recognizing Risky Thoughts that Lead to Trouble	15. Dealing With an Accusation
8. New Thinking	

In 2021, over 27 sessions of CBI were presented to the residents at the Juvenile Justice Center.

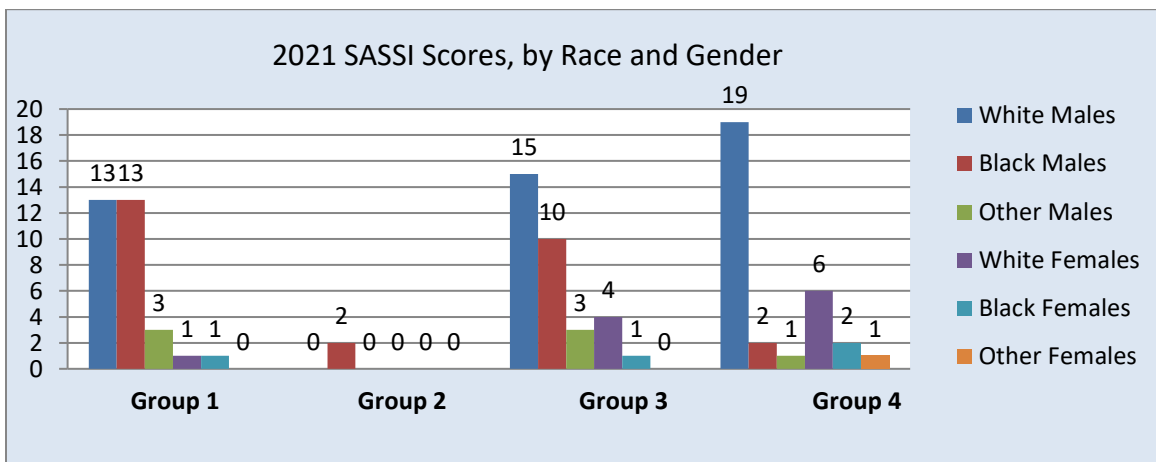
Library

In 1990, a library was created at the Juvenile Justice Center. The creation of the library was primarily related to the increased emphasis on the use of Risk and Needs assessments, supervision contracts and case plans. The library contains resources for each of the needs areas identified in the assessments, plus educational information for staff development, activities for juveniles and their parents which are used in supervision contracts, and referral information regarding outside resources for juveniles, families, and staff. The Juvenile Justice Center has received donations of new books for the library from community organizations and reading programs on several occasions throughout the years. As part of the facility expansion that was completed in late 2004, the space for the library was enlarged. The Juvenile Justice Center was able to accommodate many books purchased by Columbia Public Schools and donated by the public library for juveniles in residence at the center, in the district's effort to encourage juveniles to read.

Substance Abuse Subtle Screening Inventory (SASSI)

The Adolescent SASSI-A2 is designed for juveniles 12 years age or older, to identify those who have a high probability of having a substance abuse issue, including both substance abuse disorder and substance abuse dependence. It also identifies juveniles who have a low likelihood for substance abuse. This test is administered within 24 to 48 hours after admission to the Robert L. Perry Juvenile Justice Center. The test is not administered to juveniles who have taken the SASSI-A2 within the previous 12 months, unless there has been an identified change in substance use.

In 2021, of the 193 admissions, 148 juveniles completed valid assessments, 29 completed them within the previous 12 months, 12 were less than 24 hours, underage or uncooperative, and 16 were invalid.

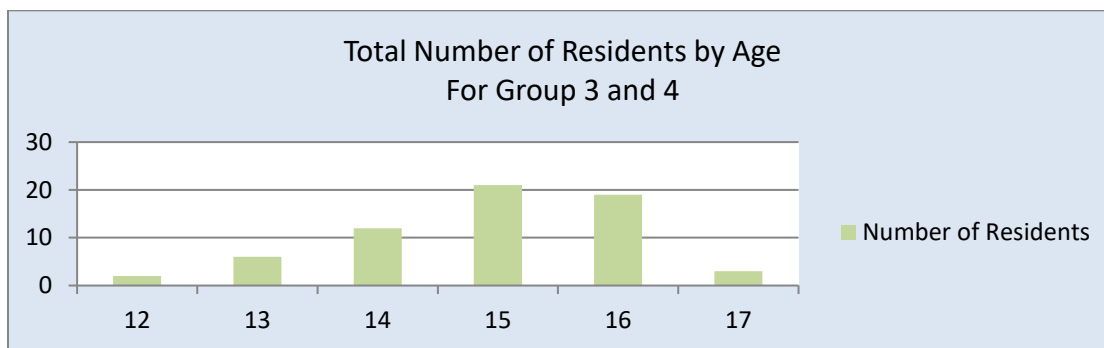


Group 1: Low Probability for substance abuse or dependence

Group 2: Consider for further assessment, particularly for substance abuse disorder

Group 3: Consider for further assessment; high probability for substance abuse disorder

Group 4: Consider for further assessment; high probability for substance abuse dependence



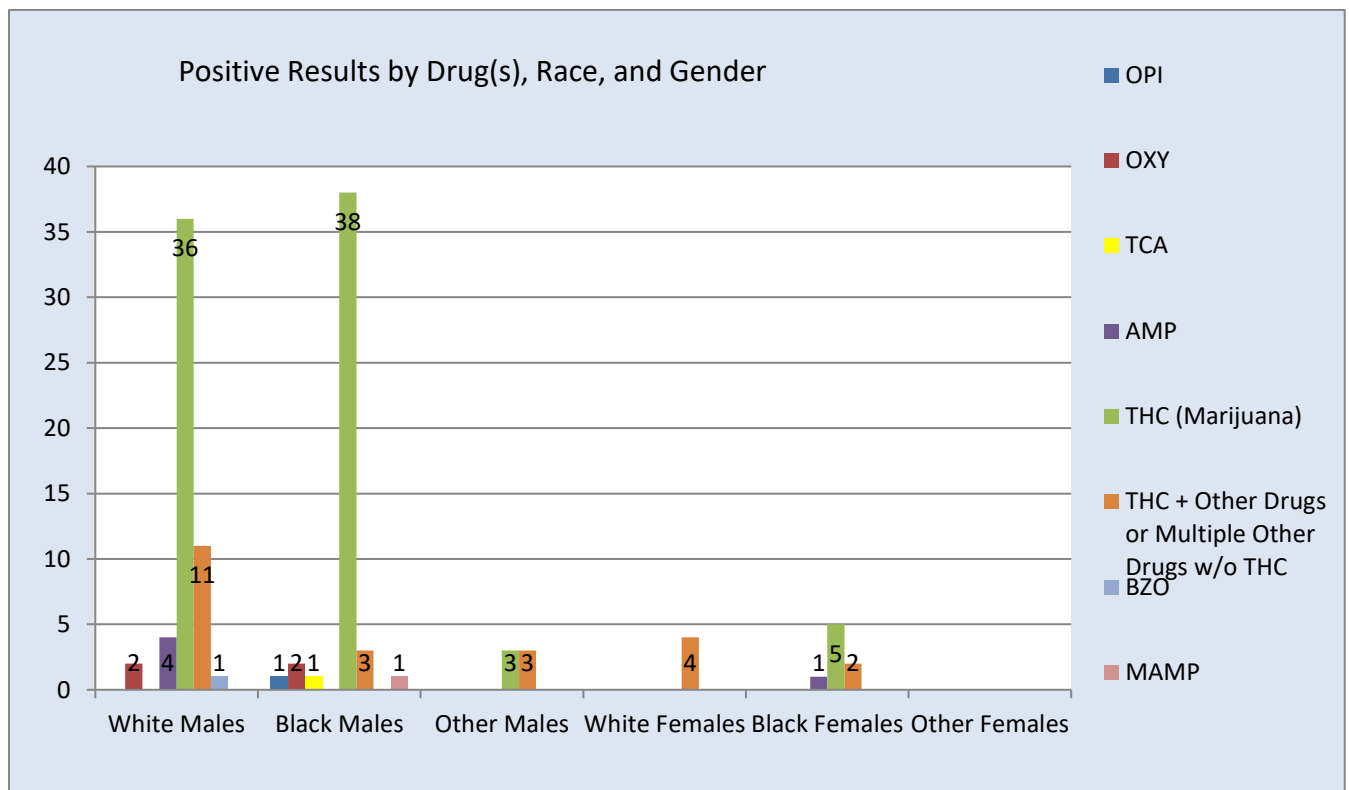
Of the juveniles who were administered the SASSI, 64, or 66%, scored in Group 3 or Group 4 (having a high probability for either substance abuse disorder or dependence). Since the testing instrument considers family history of substance abuse, and would also include juveniles who have already received intensive substance abuse treatment services (perhaps multiple times), referrals for substance abuse assessments are not based solely on the SASSI score. Some of the other referral criteria include detaining offense, drug test results at the time of admission, self-report, information obtained by parent, and substance abuse treatment history. When it is determined that a juvenile should be referred for a substance abuse assessment, staff contact a local treatment provider. The provider sends one of their staff to conduct the substance abuse

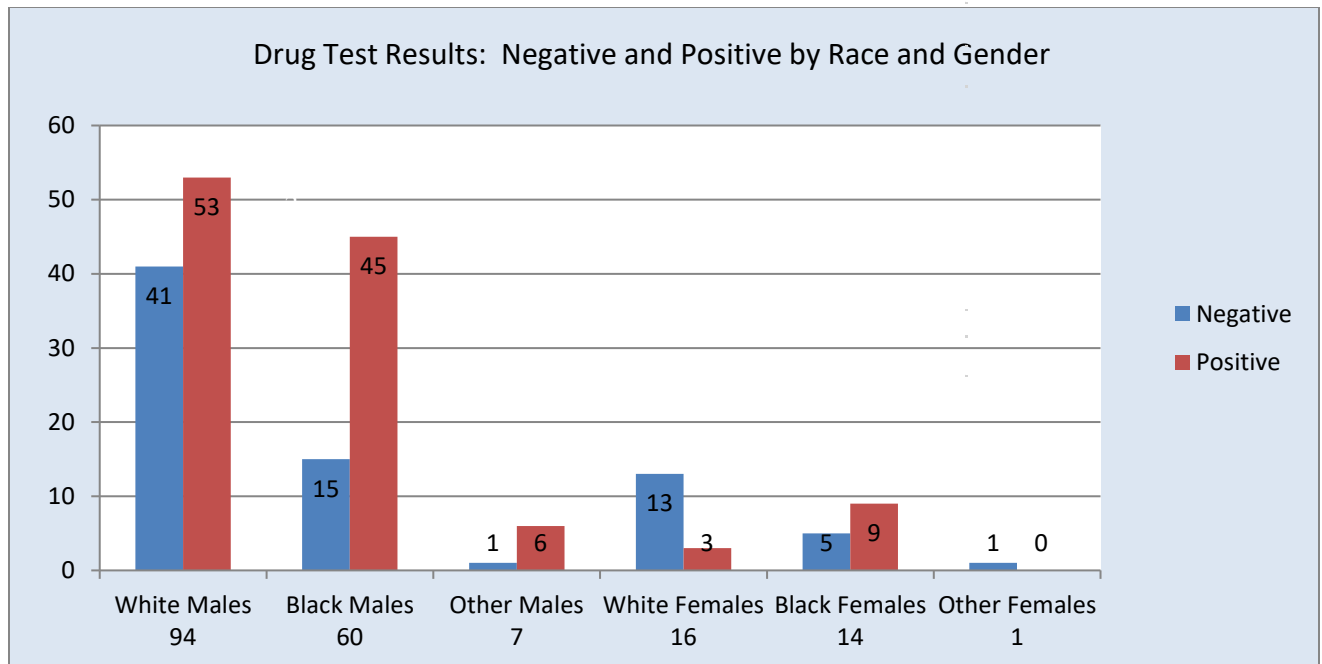
assessment at the Juvenile Justice Center. They also complete a written report that makes a recommendation based on the determination of need for treatment. It is preferred that a juvenile's parent or custodian be present at the time of the assessment, if at all possible, in order to provide information about the youth and to discuss any questions or concerns. If it is recommended that a juvenile participate in substance abuse treatment, staff ensures that arrangements are made for treatment.

Drug Testing

The policy of the Robert L. Perry Juvenile Justice Center is to administer a urinalysis drug screening during the admission process. The 12-panel drug test that is used tests for the presence of Amphetamine, Marijuana, Cocaine, Methadone, Opiates, Methamphetamine, Barbiturates, Benzodiazepines, Oxycodone, Phencyclidine, Propoxyphene, and Tricyclic Antidepressant.

Of the 193 juveniles admitted to the Robert L. Perry Juvenile Justice Center during 2021, 192 were administered drug tests. Of the 192 drug tests administered, 116, or 60%, were positive for at least one substance. 83 of the 116 (72% of the total number of positive tests) were positive for marijuana. Of the 23 residents that were positive for more than one substance, 6 were 17 years old, 3 were 16 years old, 9 were 15 years old, 4 were 14 years old and 1 was 13 years old; 17 were male and 6 were female.





The chart below indicates the drug test trend used by juveniles admitted to the Robert L. Perry Juvenile Justice Center.

	2017	2018	2019	2020	2021
AMP	5	5	12	1	5
BAR	1	0	0	0	0
BZO	0	0	3	0	1
COC	0	0	0	0	0
MAMP	7	1	2	1	1
OXY	0	0	0	0	2
PCP	0	2	1	0	0
THC	96	88	74	74	82
THC + Other Drugs or Multiple Other Drugs W/O THC	19	23	14	17	23
% of Positive Tests out of Total Admissions	52%	52%	54%	51%	59%
Total	128	119	106	93	114

Substance Abuse Assessment & Programming

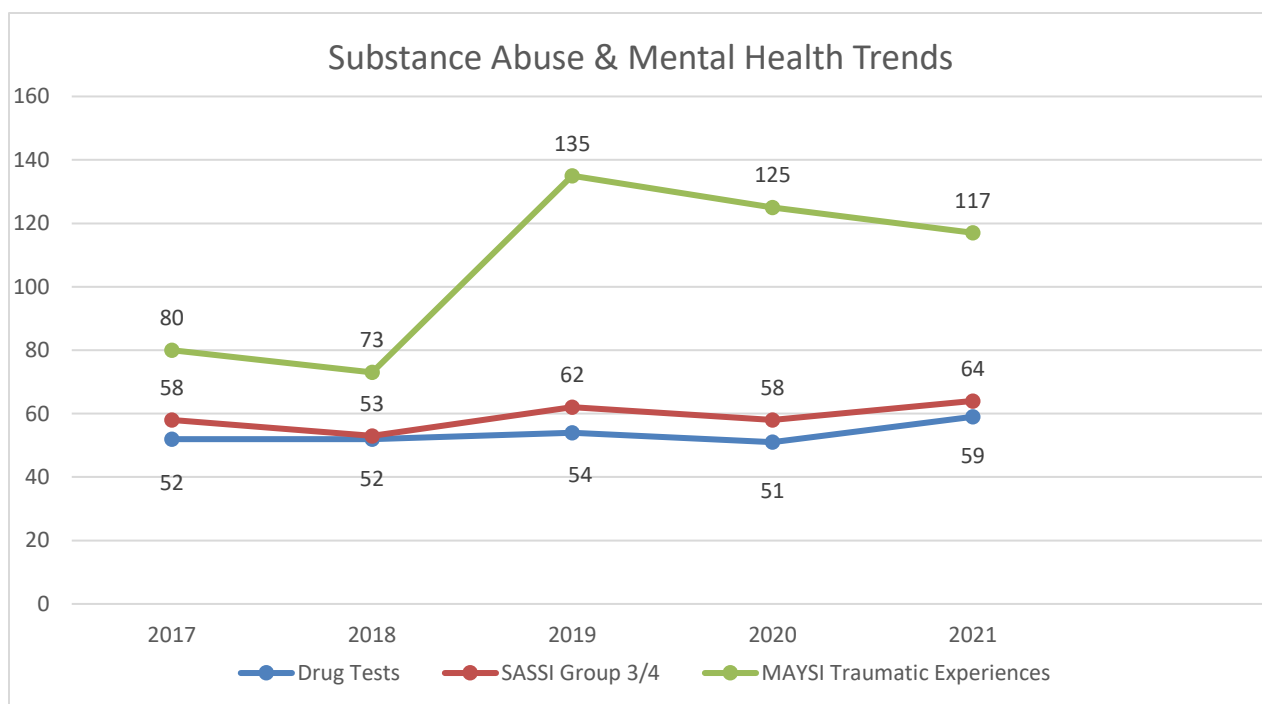
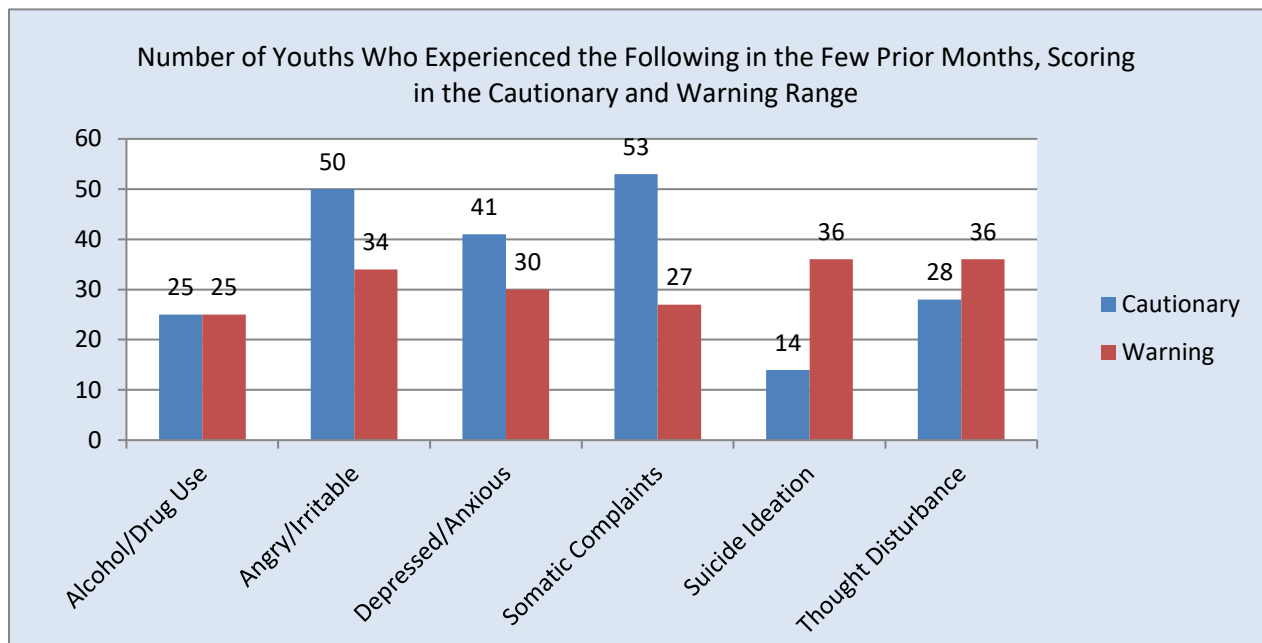
A resident at the Robert L. Perry Juvenile Justice Center may be referred for a substance abuse assessment based on order of the court, drug testing results, SASSI results, and criminogenic risk factors. The assessment assists in determining what level of services would be needed for the juvenile.

In 2021, 12 residents participated in substance abuse assessments administered by staff from local substance abuse providers while a resident of the Juvenile Justice Center. The recommendations of those assessments included inpatient substance abuse treatment, outpatient substance abuse treatment, counseling, and/or prevention programming. Residents of the Juvenile Justice Center that were recommended for substance abuse related services included 7 residents for inpatient services and 5 residents for outpatient services.

Massachusetts Youth Screening Instrument (MAYSI)

The MAYSI-2 is a brief screening tool that is designed to identify potential mental health needs. It is administered to most juveniles admitted to the Robert L. Perry Juvenile Justice Center, within 48 hours of admission. Juveniles must be at least 12 years of age in order to obtain valid results. The MAYSI-2 is a self-report inventory of 52 questions. Youths circle “Yes” or “No,” concerning whether each item has been true for them within the past few months, in the areas of Alcohol/Drug Use, Angry/Irritable, Depressed/Anxious, Somatic Complaints, Suicide Ideation, and Thought Disturbance. In the area of Traumatic Experiences, they circle “Yes” or “No” concerning whether they have ever experienced a serious trauma in their lifetime and, if so, how many traumas. Residents who score in the Cautionary and/or Warning Areas are referred, as needed, for further assessment and services.

In 2021, 170 juveniles were administered the MAYSI-2, of which 160 tests were valid. As shown in the charts on the following page, of the 160 youth with valid tests, 117 (42%) had experienced 1 to 5 serious, traumatic events in their lifetime. Youths also reported having experienced thought disturbance, suicide ideation, somatic complaints, depression/anxiety, anger/irritability, and alcohol/drug use.



When youth are admitted into the facility they are assessed for issues with both substance abuse and mental health. The above graph shows the 5-year trend in these areas: 1) Drug Tests are the percentage of youth admitted to the facility that test positive for at least one drug. 2) SASSI Group 3/4 is the percentage of youth admitted to the facility that self-reported a high risk of substance abuse dependence or substance abuse disorder. 3) MAYSI Traumatic Experiences are the percentage of youth admitted to the facility that self-reported experiencing a traumatic event(s) in their lifetime.

Medical Services

Medical services are provided on a regular basis at the Robert L. Perry Juvenile Justice Center, and medical personnel are available on an on-call basis for urgent medical concerns.

In 1974, when the Juvenile Justice Center opened, James L. Chapel, M.D., head of the University of Missouri, Department of Psychiatry, began providing medical services to residents in placement at the Center. After Dr. Chapel retired in the late 1980s, residents who had medical concerns were taken to the City Health Department. In 1992, the Boone County and City of Columbia Health Departments, together with local hospitals, the MU School of Medicine and Missouri Department of Social Services established the Boone County Family Health Center. Beginning that same year, medical personnel from the Family Health Center came to the Juvenile Justice Center once a week to provide physical examinations and treatment for acute health concerns, and they were available for emergency situations on an on-call basis. Since 1995, when the Juvenile Justice Center moved into a new, larger facility, visits by medical personnel to the Center have been on a twice-weekly basis.

Health care services provided to juveniles within the first five days of admission include a physical examination, a general dental screening, and an assessment of the need for glasses. Screening and treatment services to juveniles suffering from acute health concerns are available during regularly scheduled visits to the center on Tuesdays and Fridays. Juveniles who have been in residence at the center for seven or more days are given a tuberculin skin test. Pre-natal or post-partum care is available to female residents in need of such services.

Additional Covid-19 screening consisted of temperature checks for residents, staff and approved visitors, along with symptom questions. Quarantine guidelines were followed as required and recommended.

Mental Health

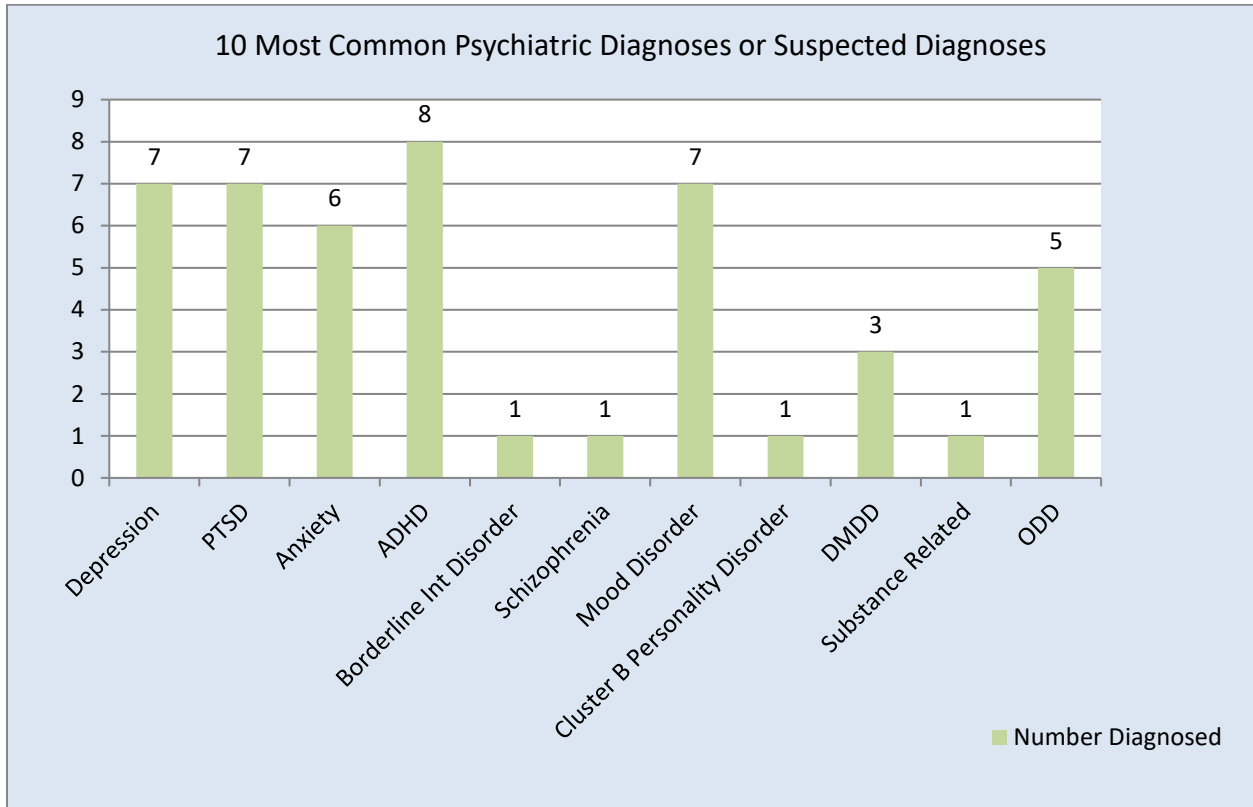
Psychiatric Services

Through a contract with the University of Missouri, Department of Psychiatry, fellows in child and adolescent psychiatry are assigned to provide twice monthly psychiatric services at the Robert L. Perry Juvenile Justice Center. These fellows are physicians completing their residencies. A resident is a person who has received a medical degree and who practices medicine under the supervision of a fully licensed physician.

In 2021, 48 different residents were seen by the psychiatric fellows including, 48 for full psychiatric assessment, the vast majority of which were 13th Circuit juveniles, and 44 for follow-up visits with the psychiatric fellows.

The psychiatric fellows are also responsible for interventions including prescribing and monitoring medications. Psychiatrists often request teaching staff to evaluate residents through the use of Vanderbilt Scales, to assist in ruling in or ruling out Attention Deficit Hyperactivity Disorder. Other interventions by the psychiatric fellows include ordering lab work, making dietary changes, referring for substance abuse assessments, making recommendations for outpatient care/counseling after release, and obtaining collateral information. In 2021, 0 Vanderbilt Scales were completed on residents, and 4 residents were transported for lab work.

The following chart denotes the 10 most common psychiatric diagnoses or suspected diagnoses among our population in 2021.



Psychological Services

In 2021, 3 different residents were ordered to undergo a psychological evaluation. Juvenile Justice Center staff assisted in scheduling and transporting 1 resident to these assessments during their placement.

Regional Detention and Evaluation Services

The facility expansion has allowed for increased bed availability for contracting circuits and the Division of Youth Services. Currently, 6 other regional circuits (10th, 12th, 14th, 18th, 20th, and 40th) and the Division of Youth Services contract with the Juvenile Justice Center for detention and evaluation services, based upon availability of resident rooms at the Center. In 2021, detention services were also provided to the 3rd, 9th, and 42nd circuits.

The COVID-19 pandemic led to an increase in circuits and Division of Youth regions that entered into contracts with Juvenile Justice Center.

Evaluation

Evaluation Report:

The evaluation process changed significantly in 2021. Previously, staff worked to prepare a detailed social summary investigation that gathered historical information regarding the juvenile and their family, including criminal history, child abuse/neglect history, and historical mental health, substance abuse, and educational information. Currently, staff at the Juvenile Justice Center have focused on identifying current problematic areas in the juvenile's life, and to address those issues in a timely manner. The juvenile receives case plan work from their Detention Deputy Juvenile Officer. The juvenile works to complete the specified tasks and goals that are based on identified risk and needs areas, including their issues related to their adjudicated offenses. The Detention Deputy Juvenile Officer completes a report on the juvenile's conduct and effort, completion of assigned tasks, as well as any participation in programming at the Juvenile Justice center. The report is forwarded to the Juvenile Office, to be filed in conjunction with their Pre-Disposition Report and recommendations.

Additional Evaluation Services:

In addition to full evaluations, youths adjudicated for sex offenses are ordered to undergo sexual offender evaluations. Sexual offender evaluations are completed by a licensed psychologist specializing in forensic science, with a specialty in sexual offending behaviors. Pursuant to section 191.663, RSMo, these juveniles are required to submit to HIV testing, and pursuant to section 211.425, RSMo, they are required to register as juvenile sex offenders.

If ordered, evaluations pursuant to section 211.202, RSMo, and 211.203 RSMo are completed at the Juvenile Justice Center by the Department of Mental Health. These evaluations are ordered if a child under the jurisdiction of the Juvenile Court appears to be mentally disabled, intellectually disabled, or developmentally disabled. These evaluations shall be performed within 20 days of the order.

Certification

In 2021, the Juvenile Officer was ordered to complete waiver of jurisdiction investigations on seven male youth. Staff at the Robert L. Perry Juvenile Justice Center completed reports. The outcome was as follows:

- One black male youth was certified.

- Two black male youths and one white male youths continued as Wards of the Court.
- One black male youth was committed to Division of Youth Services.
- Two black male youths were carried over to 2022.

Security Services

In March 1999, the Robert L. Perry Juvenile Justice Center instituted new security procedures. The Boone County Commission approved a budget request for funding of the services of security support staff to provide security services during visitation hours at the Juvenile Justice Center.

The overwhelming majority of parents or custodians of juveniles in residence at the center have been cooperative and have posed no security issues; however, due to threats made by some parents, it was believed that additional security precautions were warranted.

The security support staff, through the use of a hand-held metal detector, scans each visitor for weapons before the visitor is granted entrance to the facility. In the event of any real or perceived threat, the security support staff is available for immediate assistance. Their presence during visiting times has greatly enhanced the safety and security of residents, visitors, and staff at the Juvenile Justice Center. Due to COVID during 2021, in-person visitation was suspended for the majority of the year. Alternatively, parents were offered virtual visits and continued daily phone calls with the residents.

Community Service Work

The Community Service Work Program is one of the mechanisms the juvenile court employs to promote the philosophy of accountability. This program requires a juvenile offender to work a specified number of hours, with no compensation, as a way of repaying the community for his or her offense(s).

Residents in placement at the Juvenile Justice Center have the opportunity to complete previously ordered community service work hours, if they are in residence on the program wing of the Juvenile Justice Center. They must have the approval of supervisory staff and their participation is behavior-dependent. Under the supervision of assigned staff, they are involved in such tasks as cleaning, painting, and gardening.

In 2021, residents' completed hours were provided to the Juvenile Office to be credited to their outstanding community service work. Residents also completed community service work for restitution as a means to provide restitution to victims who would otherwise not receive payment.

- 2017 79 hours of community service work completed
- 2018 13 hours of community service work completed
- 2019 Although hours were completed and turned in, they
Were not coded as being completed at JJC.
- 2020 Although hours were completed and turned in, they
were not coded as being completed at JJC.
- 2021 Although hours were completed and turned in, they
were not coded as being completed at JJC.

Prison Rape Elimination Act (PREA)

The Robert L. Perry Juvenile Justice Center complies with the Prison Rape Elimination Act (PREA) Standards. The Juvenile Justice Center is committed to a zero tolerance standard for incidents of sexual abuse and sexual harassment. The Prison Rape Elimination Act of 2003 was signed into federal law, and therefore initiated the development of a set of standards to prevent, detect, and eliminate incidents of sexual abuse and harassment. PREA applies to facilities operated by, or on behalf of, state and local governments and the Department of Justice.

PREA supports the elimination, reduction, and prevention of sexual abuse and sexual harassment within corrections systems, including juvenile detention facilities.

PREA:

- Establishes a zero-tolerance standard for the incidents of sexual abuse in confinement settings in the United States, including juvenile detention facilities;
- Makes the prevention of sexual abuse a top priority in each correctional system;
- Develops and implements national standards for the detection, prevention, reduction, and punishment of prison/detention rape;
- Increases the accountability of corrections/detention officials who fail to detect, prevent, reduce, and punish prison/detention rape;
- Requires the collection of statistical data regarding the prevalence of sexual abuse in facilities; and
- In the past provided periodic funding of grants for state correctional systems to address factors that contribute to the incidents of sexual abuse.

PREA: What Is It?

In September 2003 the Prison Rape Elimination Act was signed into law and became the first federal law to address sexual abuse and harassment of incarcerated individuals. The law mandates that states adopt “Zero Tolerance” for all forms of offender sexual abuse and harassment and that each state make prevention of offender sexual abuse and harassment a top priority.

Zero Tolerance Policy

Every juvenile detained has the right to be free from sexual abuse and harassment. In accordance with the Prison Rape Elimination Act, the Juvenile Justice Center has a zero-tolerance policy for all forms of resident sexual abuse and harassment. Juvenile Justice Center staff shall refer all allegations of sexual abuse and sexual harassment to the appropriate investigative agencies based upon the victim’s age. The external investigating agencies are aware of the PREA requirements and will actively seek prosecution when a perpetrator is identified.

Sexual abuse is defined as any type of unwanted sexual contact. When sexual contact is accomplished through fear, threat or implied threat, it is considered sexual abuse. Staff-on-resident sexual misconduct will not be tolerated. It is against state law for a staff member, contractor or volunteer to engage in any type of sexual behavior with a resident.

The Juvenile Justice Center has taken various steps to stop sexual abuse and harassment including increasing the number of security cameras, providing residents with multiple ways to report sexual abuse, training staff to recognize the signs and symptoms of sexual abuse, and educating residents on how to avoid and report sexual abuse.

Reporting Sexual Abuse or Harassment

The Juvenile Justice Center takes the safety of residents very seriously and ensures that everyone that is detained or works within our facility understands the signs and symptoms of sexual abuse and how to report allegations of abuse.

Residents

Residents are encouraged to report sexual abuse immediately. Residents are provided a number of ways to report abuse which includes reporting to a trusted staff member or a community service provider. In addition, residents may report abuse through the resident grievance process.

Staff

Staff having knowledge of resident-on-resident or staff-on-resident sexual abuse must report immediately to the shift supervisor while keeping the victim safe.

Friends and Family

Friends and family of residents detained at Juvenile Justice Center may report offender sexual abuse and harassment by calling 573-886-4450 and speaking with a supervisor, or submitting a written grievance report.

When reporting resident sexual abuse or harassment, the reporter will be asked to provide information that will assist in the investigation such as the resident's name, where the alleged incident occurred, and time and date of the incident, as well as a brief summary of the allegation.

In 2021, there was 0 report of youth-on-youth allegations or staff-on-youth harassment allegations.

The Juvenile Justice Center is audited every three years.