



13th Judicial Circuit of Missouri
Serving Boone and Callaway Counties

Jury Service

Jury Panel & Trial Data
2022

Annual Overview from the Jury Supervisor

It has been my pleasure working with the 13th Circuit Court, as well as the members of our Boone and Callaway communities. I have just completed one full year as the Jury Supervisor, and during this time, my team and I have identified areas where we may increase accuracy of reports, and we have revised our procedures to increase efficiency and available assistance on days Jurors are asked to report. Callaway had an interesting development with the construction of a new Justice Center, which we are looking forward to using as our base of operations in 2023. We are also engaged in the production of a Jury Supervisor Reference Guide, which is intended to preserve our accumulated experience for future generations.

Below, you will find statistics, presented for Boone and Callaway, all the way from the creation of the Jury Panel, down to the number of Jurors selected to hear a trial. It is our intention to preserve and present this data in transparency, for the best interest of the public.

Thank you,

A handwritten signature in black ink, appearing to read "Martin Hoy", with a stylized flourish at the end.

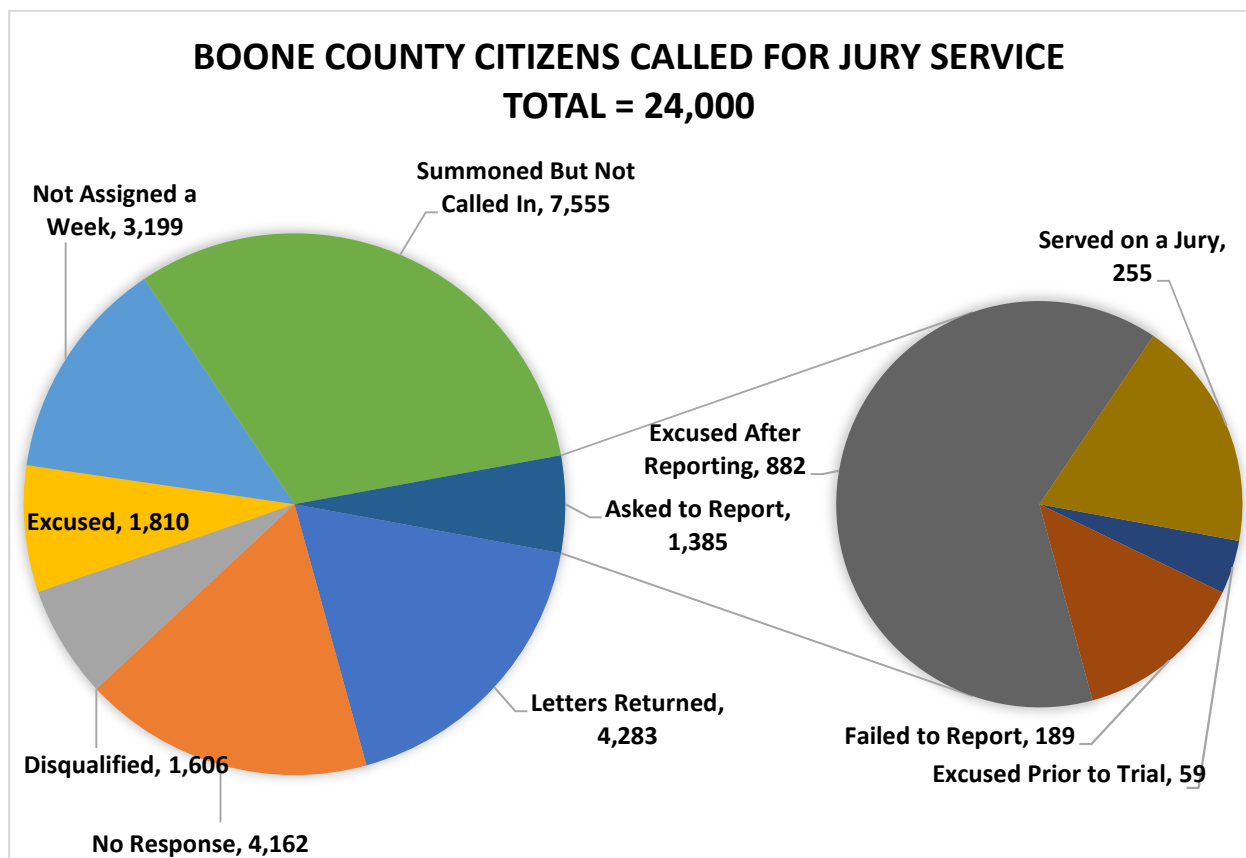
Martin Hoy
Jury Supervisor

Jury Service Boone County

Jury service in Boone County consists of a two-month term of service. If selected, individuals are assigned one week during that two-month term. They are assigned a juror number and asked to call or check online every evening during their assigned week to see if they are needed for jury service.



As shown below, 24,000 questionnaires were sent out to potential jurors in Boone County in 2022. Many jurors are disqualified, excused or deferred before actually being called to serve. For 2022, 8,940 individuals were assigned a week of service but only 1,385 were asked to report. The total number of individuals who actually served on a jury was 255. The 189 jurors who failed to report were either placed in a future term or asked to report to the courthouse and appear before a judge to state why they were unable to appear for jury service.



Boone County

Jury Panel Service Overview

	2018		2019		2020		2021		2022	
	#	%	#	%	#	%	#	%	#	%
Questionnaires Sent	21,000	100%	24,000	100%	23,000	100%	25,625	100%	24,000	100%
Letters Returned	3,021	14%	3,372	14%	3,630	16%	4,494	17%	4,283	18%
No Response	3,210	15%	3,510	15%	4,380	19%	4,338	17%	4,162	17%
Disqualified	2,108	10%	2,291	10%	1,605	7%	1,727	7%	1,606	7%
Excused	1,795	9%	2,254	9%	1,861	8%	2,017	8%	1,810	8%
Eligible	10,866	52%	12,573	52%	11,524	50%	13,049	51%	12,139	50%
Eligible	10,866	100%	12,573	100%	11,524	100%	13,049	100%	12,139	100%
Reserve – Not Assigned	2,158	20%	2,685	22%	3,481	30%	3,724	29%	3,199	26%
Assigned a Week	8,708	80%	9,888	78%	8,043	70%	9,325	71%	8,940	74%
Assigned a Week	8,708	100%	9,888	100%	8,043	100%	9,325	100%	8,940	100%
Not Called In	6,875	79%	7,896	80%	7,033	87%	7,757	83%	7,555	85%
Asked to Report	1,833	21%	1,992	20%	1,010	13%	1,568	17%	1,385	15%
Asked to Report	1,833	100%	1,992	100%	1,010	100%	1,568	100%	1,385	100%
Excused Prior to Trial	0	0%	0	0%	12	1%	57	4%	59	4%
Absent	278	15%	152	8%	127	13%	205	13%	189	14%
Reported for a Panel	1,555	85%	1,840	92%	871	86%	1,306	83%	1,137	82%
Reported for a Panel	1,555	100%	1,840	100%	871	100%	1,306	100%	1,137	100%
One Panel	1,555	100%	1,840	100%	871	100%	1,306	100%	1,137	100%
Two Panels	0	0%	0	0%	0	0%	0	0%	0	0%
Three or more Panels	0	0%	0	0%	0	0%	0	0%	0	0%
Excused after Reporting	1,211	78%	1,610	88%	685	78%	1,038	79%	882	78%
Served on a Jury	344	22%	230	12%	186	22%	268	21%	255	22%
Served on a Jury	344	100%	230	100%	186	100%	268	100%	255	100%
One Day	140	41%	104	45%	64	34%	90	34%	90	35%
Two Days	104	30%	52	23%	93	50%	94	35%	53	21%
Three Days	42	12%	42	18%	0	0%	39	15%	84	32%
Four Days	28	8%	14	6%	17	9%	14	5%	14	6%
More than Four Days	30	9%	18	8%	12	7%	31	11%	14	6%
Questionnaires Sent	21,000	100%	24,000	100%	23,000	100%	25,625	100%	24,000	100%
Asked to Report	1,833	9%	1,992	8%	1,010	4%	1,568	6%	1,385	6%
Served on a Jury	344	2%	230	1%	186	0.8%	268	1%	255	1%

Jury Trial Statistics Boone County

2022 saw two fewer trials from the previous year. Of the 19 jury trials held there were 5 civil and 14 criminal verdicts returned. There was a total of 3 jury trials in the months of April, June, and September, of 2022, making nearly 50% of the yearly jury trials held in only 3 Months. For September, two of the jury trials began on the same day, making September 20, 2022 the busiest jury day of the year. 89% of all Jury Trials in 2022 were heard in the Ceremonial courtroom, with the remaining 11% being heard in 3 West.

	2018	2019	2020	2021	2022
Number of Panels Reporting	29	20	15	21	19

Panels Dismissed Before Verdict Rendered	4	3	1	1	0
---	---	---	---	---	---

# of Actual Trials	25	17	14	20	19
---------------------------	----	----	----	----	----

Divisions in Which Trials had Panels Reporting

I	4	3	5	7	6
II	4	3	2	4	4
III	9	6	6	4	4
IV	7	6	2	3	3
V	0	0	0	0	1
IX	1	0	0	1	1
XI	0	0	0	2	1
Visiting Judge	4	2	0	0	0

Ceremonial	13	9	10	21	17
1 West	0	0	0	1	0
3 West	16	11	4	0	2

CIVIL VERDICTS

Plaintiff	5	0	1	5	1
Defendant	3	2	2	2	4

CRIMINAL VERDICTS

Guilty	13	6	10	8	9
Not Guilty	4	8	1	5	5

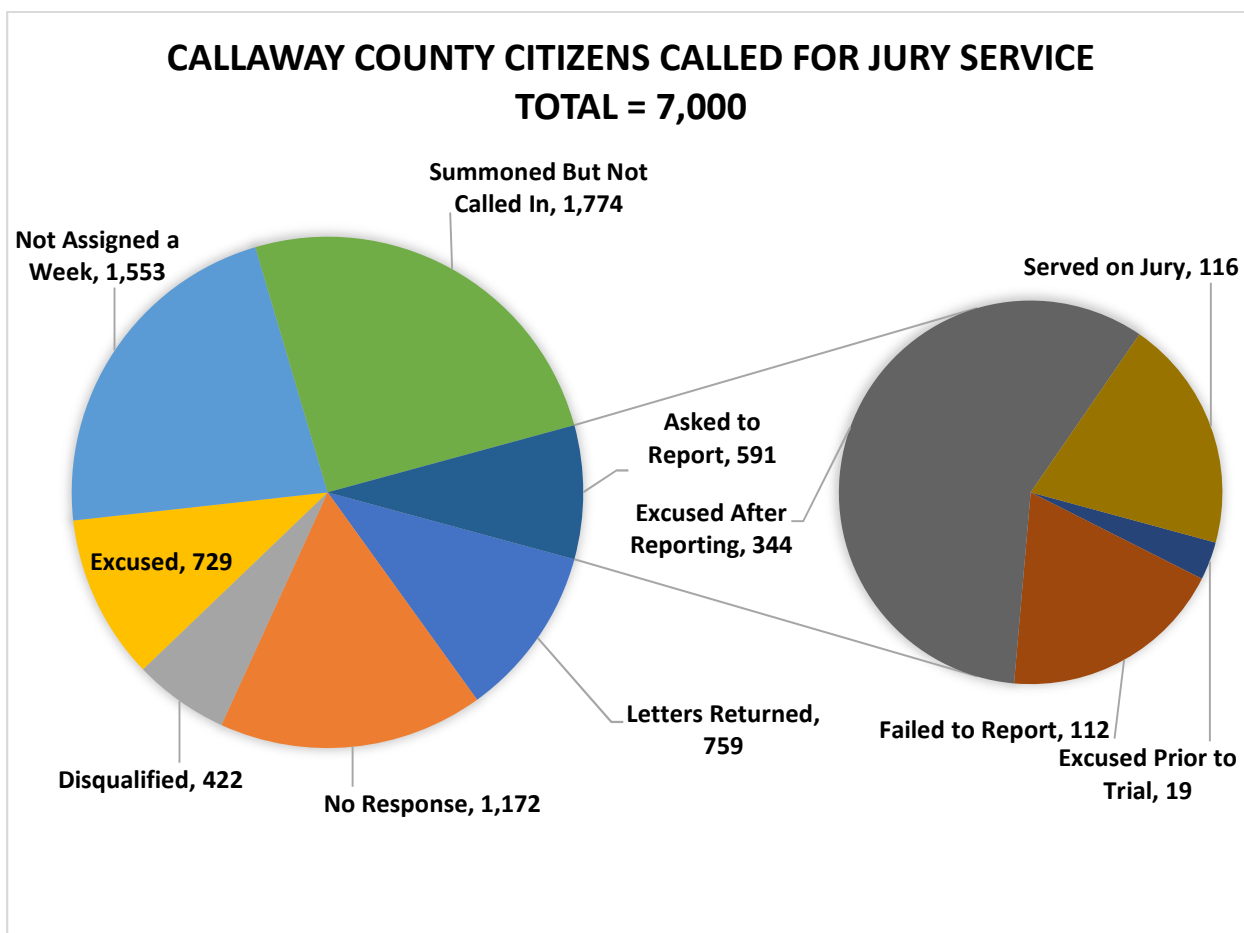
MALE	721	476	331	597	523
FEMALE	832	592	420	709	614



Jury Service Callaway County

Jury service in Callaway County consists of a three-month term of service. If selected, individuals are assigned two weeks during the quarter. They are assigned a juror number and asked to call or check online every evening during that two-week period to see if they are needed for jury service.

As shown below, 7,000 questionnaires were sent out for qualifying potential jurors in 2022. Of the 7,000 questionnaires, 2,365 individuals were assigned a two-week term of service, but only 591 were actually asked to report. The total number of individuals that served on a jury was 116. The 112 jurors who failed to report were either placed in a future term or asked to report to the courthouse and appear before a judge to state why they were unable to appear for jury service.



Callaway County

Jury Panel Service Overview

	2018		2019		2020		2021		2022	
	#	%	#	%	#	%	#	%	#	%
Questionnaires Sent	6,000	100%	8,000	100%	7,250	100%	6,750	100%	7,000	100%
Letters Returned	565	9%	741	9%	714	10%	735	11%	759	11%
No Response	828	14%	1,155	14%	1,186	16%	1,112	16%	1,172	17%
Disqualified	751	13%	593	8%	524	7%	411	6%	422	6%
Excused	592	10%	976	12%	719	10%	712	11%	729	10%
Eligible	3,264	54%	4,535	57%	4,107	57%	3,780	56%	3,918	56%
Eligible	3,264	100%	4,535	100%	4,107	100%	3,780	100%	3,918	100%
Reserve – Not Assigned	593	18%	1,300	29%	2,436	59%	1,035	27%	1,553	40%
Assigned a Week	2,671	82%	3,235	71%	1,671	41%	2,745	73%	2,365	60%
Assigned a Week	2,671	100%	3,235	100%	1,671	100%	2,745	100%	2,365	100%
Not Called In	1,936	72%	2,946	91%	1,471	88%	2,070	75%	1,774	75%
Asked to Report	735	28%	289	9%	200	12%	675	25%	591	25%
Asked to Report	735	100%	289	100%	200	100%	675	100%	591	100%
Excused Prior to Trial	0	0%	0	0%	5	3%	20	3%	19	3%
Absent	149	20%	63	22%	34	17%	119	18%	112	19%
Reported for a Panel	586	80%	226	78%	161	80%	536	79%	460	78%
Reported for a Panel	586	100%	226	100%	161	100%	536	100%	460	100%
One Panel	586	100%	226	100%	161	100%	536	100%	428	93%
Two Panels	0	0%	0	0%	0	0%	0	0%	32	7%
Three or more Panels	0	0%	0	0%	0	0%	0	0%	0	0%
Excused after Reporting	430	73%	173	77%	122	76%	428	80%	344	75%
Served on a Jury	156	27%	53	23%	39	24%	108	20%	116	25%
Served on a Jury	156	100%	53	100%	39	100%	108	100%	116	100%
One Day	91	58%	26	49%	39	100%	26	24%	90	76%
Two Days	53	34%	27	51%	0	0%	13	12%	13	12%
Three Days	0	0%	0	0%	0	0%	55	51%	13	12%
Four Days	12	8%	0	0%	0	0%	0	0%	0	0%
More than Four Days	0	0%	0	0%	0	0%	14	13%	0	0%
Questionnaires Sent	6,000	100%	8,000	100%	7,250	100%	6,750	100%	7,000	100%
Asked to Report	735	12%	289	4%	200	3%	675	10%	591	8%
Served on a Jury	156	3%	53	0.6%	39	0.5%	108	1.6%	116	1.7%

Jury Trial Statistics Callaway County

During 2022, Callaway showed an increase of one trial from the previous year. A point of interest, there were no civil jury trials heard in Callaway in 2022. Regarding the criminal trials heard in Callaway, all but 1 jury trial resulted in a verdict being rendered. Of the verdicts rendered, there was an even 50% split between Guilty and Not Guilty. Of the 9 jury trials heard in Callaway, 4 were in the months of October and November, meaning that 45% of the yearly jury trials were held in only 2 months. The busiest of these weeks were November 14 – 25, of 2022, where 32 jurors were asked to report to the courthouse for a second panel.

	2018	2019	2020	2021	2022
Number of Panels Reporting	12	4	3	8	9

Panels Dismissed Before Verdict Rendered	0	0	0	0	1
---	---	---	---	---	---

# of Actual Trials	12	4	3	8	8
---------------------------	----	---	---	---	---

Divisions in Which Trials had Panels Reporting

I	4	1	0	2	2
II	2	1	1	3	1
III	2	1	2	2	4
IV	1	1	0	1	2
VI	2	0	0	0	0
VII	1	0	0	0	0
Visiting Judge	0	0	0	0	0

CIVIL VERDICTS

Plaintiff	0	0	0	1	0
Defendant	0	0	0	0	0

CRIMINAL VERDICTS

Guilty	10	3	2	5	4
Not Guilty	2	1	1	2	4

MALE	268	92	77	240	196
FEMALE	318	134	84	296	264

Jury Exit Questionnaires

When individuals are called for jury service, it is important that they receive courteous, responsive, and respectful treatment. Exit Questionnaires were developed as a way to improve jury service throughout the 13th Judicial Circuit.

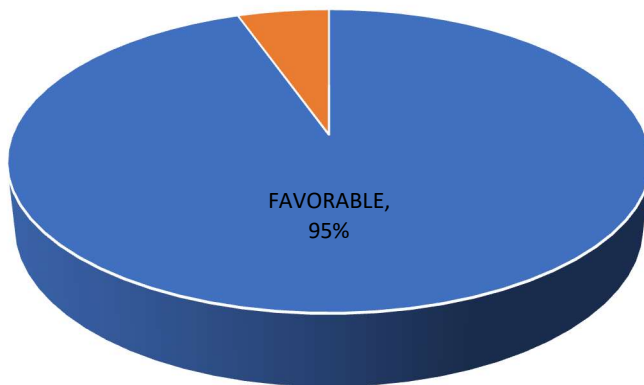
As jurors report for service, the Court Marshals and Jury Administration assist with checking attendance, preparing seating charts, and creating rosters for the judge and attorneys. After attendance has been verified, Deputy Marshals instruct panel members on how the day will proceed, the courtroom location and judge, and type of case they will be hearing that day. Those panel members assembled are presented with an Orientation Video, which provides a detailed overview of the jury selection process. During this orientation, jurors are informed of, and provided with, an Exit Questionnaire, which they may return confidentially. Panel members are then escorted into the courtroom to begin the selection process.

The following charts and data were compiled from data collected from answers indicated on all Exit Questionnaires returned for the year 2022. Certain categories* indicate the percentage of Excellent or Good responses, out of the total 100% returned.

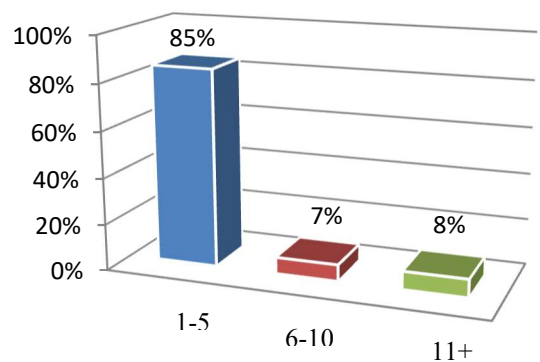
**CHARTS ARE COMPRISED OF DATA COMBINED FROM
BOONE & CALLAWAY**

OVERALL IMPRESSION OF JURY SERVICE

UNFAVORABLE, 5%

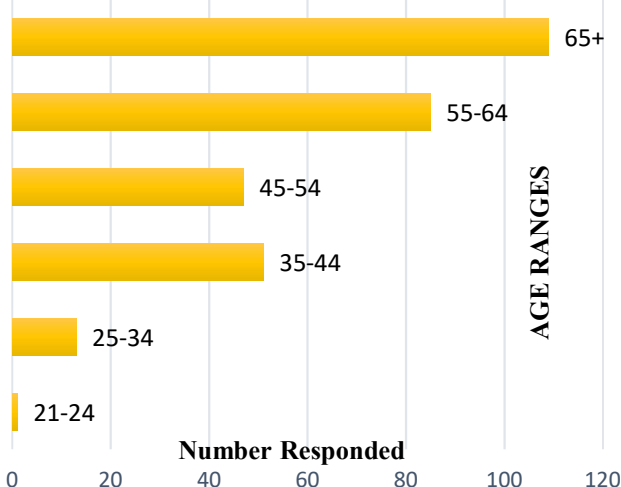
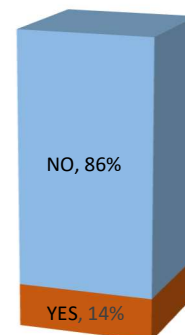


How many days did you report to the courthouse during this period of jury service?



Number of Days

Did you lose any income as a result of jury service?



Jury Exit Questionnaires	Combined Totals for both Boone and Callaway Counties			Boone	Callaway
	2020	2021	2022	2022	2022
Gender					
Men	35%	37%	37%	39%	27%
Women	65%	63%	63%	61%	73%
Age Group					
21 – 24	2%	1%	1%	1%	0%
25 – 34	9%	4%	6%	3%	10%
35 – 44	13%	12%	17%	18%	12%
45 – 54	18%	17%	15%	14%	19%
55 – 64	24%	29%	28%	29%	23%
65 and over	34%	37%	33%	35%	34%
Prior Service					
Yes	48%	49%	49%	47%	56%
No	52%	51%	51%	53%	44%
Federal	18%	10%	11%	10%	15%
State	78%	84%	85%	87%	77%
Grand Jury	4%	6%	4%	3%	8%
Number of Days Reporting					
1 – 5 Days	97%	92%	85%	86%	79%
6 – 10 Days	3%	7%	7%	5%	21%
More than 10 Days	0%	1%	8%	9%	0%
Type of Case					
Civil	26%	38%	28%	33%	0%
Criminal	74%	62%	72%	67%	100%
Loss of Income					
Yes	15%	12%	14%	15%	13%
No	85%	88%	86%	85%	87%
Impression of Service					
Favorable	89%	92%	95%	94%	95%
Unfavorable	11%	8%	5%	6%	5%
* Jurors that responded Excellent / Good, out of 100%					
Scheduling of Time	79%	74%	72%	75%	64%
Clarity of Call-In Instructions	95%	96%	97%	98%	94%
Parking	86%	89%	74%	81%	47%
Handouts/Booklets	90%	91%	92%	92%	92%
Initial Orientation	96%	98%	97%	97%	96%
Orientation Video	80%	86%	87%	72%	96%
Treatment by Staff	98%	95%	98%	98%	96%
Treatment by Marshals	98%	98%	98%	99%	96%
Assembly Room	87%	83%	84%	85%	75%
Courtroom	80%	75%	81%	80%	88%
Deliberation Room	88%	89%	88%	90%	81%
Restrooms	90%	88%	93%	94%	86%
Personal Safety	95%	94%	96%	97%	92%